



Baltimore Regional Transportation Board

Safety Planning on the Local Level: Being Strategic and Specific

*2019 AMPO Annual Conference
October 24, 2019*



Baltimore Regional Transportation Board *Baltimore Metropolitan Council*



Regional Safety Performance Measures - PM1



- Target 2015-2019
 - Follow state TZD methodology
 - Fatalities - 184
 - Serious injuries - 1,211
 - Fatality rate - 0.70
 - Serious injury rate - 462
 - Non-motorist fatalities + serious injuries - 222

BALTIMORE REGIONAL TRANSPORTATION BOARD

→ **Technical Committee**

→ **Public Advisory Group**

→ **Interagency Consultation Group (air quality)**

→ **Cooperative Forecasting Group**

→ **Freight Movement Task Force**

→ **Safety Subcommittee**

→ **Traffic Incident Management Committee**

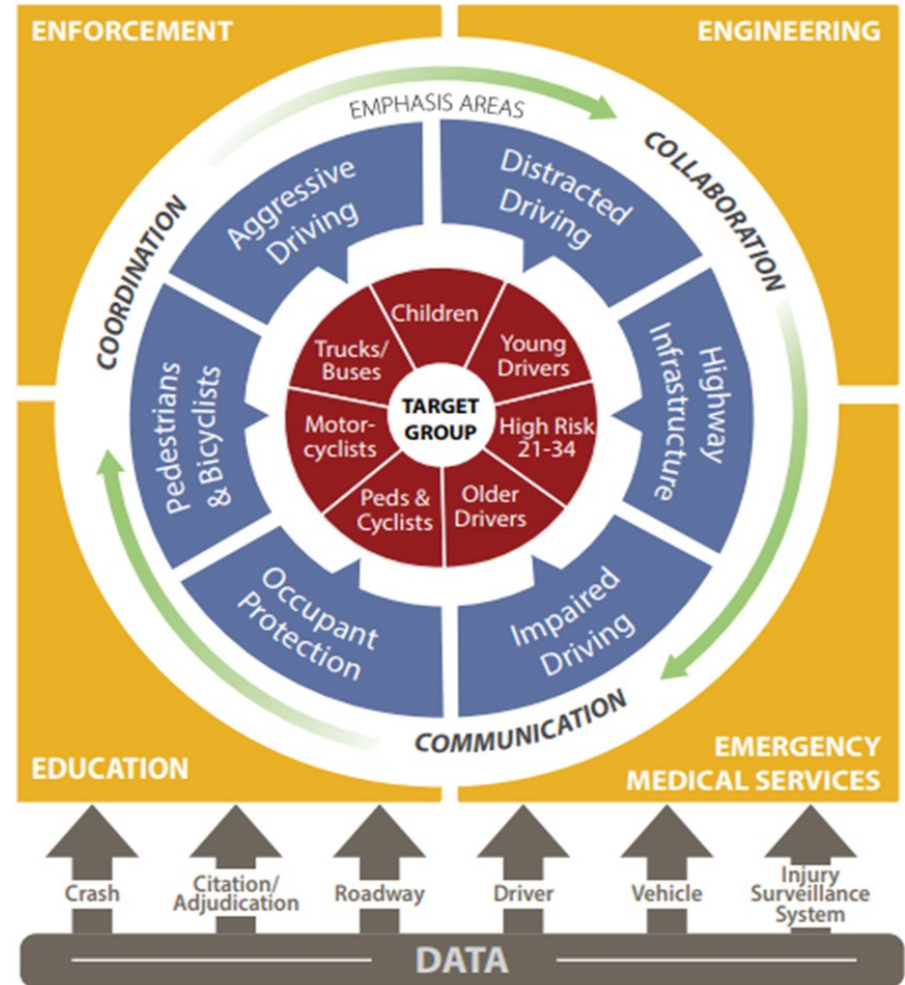
→ **Traffic Signal Subcommittee**

→ **Transportation & Public Works Committee**

→ **Bicycle and Pedestrian Advisory Group**



Safer Roads in Maryland



Why do one? The state already has



s?

Critical setup



- Local effort
 - Whole plan/effort must be led by local partners
 - Tied in to BRTB committees
 - Local buy-in
 - Top-down increases possibility for local funding
 - Bottom-up increases likelihood of implementation
 - One agency or a consultant writing the plan will not guarantee other local partners will invest and participate
 - Then just a plan on the shelf and a box checked

Critical setup



- State support
 - Highway Safety Office funding
 - Highway Safety Improvement Program opportunities
 - Legislative/budgetary support

Components



- Plan to include:
 - Data-driven goals/targets
 - Emphasis areas
 - Strategies
 - Action items
 - Implementation plan
 - Evaluation tool
 - Ongoing tracking and evaluation with annual report/update
- Executive support:
 - Local approval and endorsement is key

Steps (whole group)

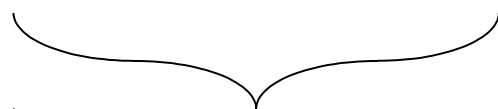
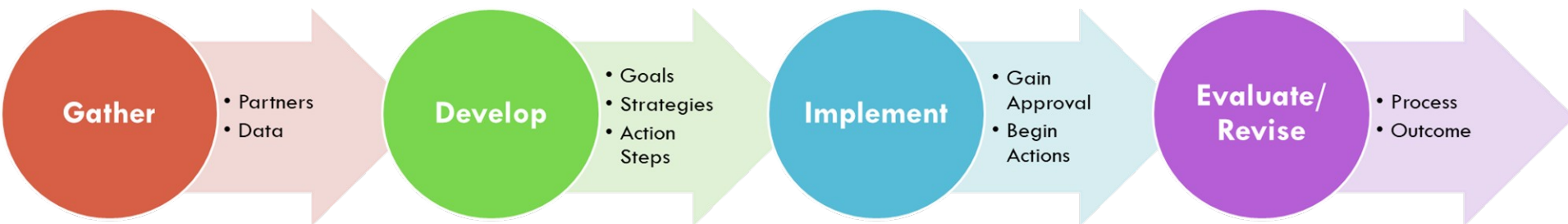
Support (BMC)



1. Meet to review current status
2. Identify partners
3. Convene a kickoff meeting
 - Review planning process
 - Review data
 - Begin thinking of strategies
4. Meet to finalize strategies
 - Begin thinking of Action Items
5. Meet to finalize Action Items
 - Develop evaluation tool
6. Finalize plan/get approval/
begin implementation

- Arrange meeting
- Reach out to partners
- Arrange/facilitate meeting
 - With template
 - With data partners
- Facilitate meeting
 - Ongoing discussions
- Facilitate meeting
 - Ongoing discussions
- Compose plan/track implementation

(Aggressive) Timeline



months 1-6





- Executive Steering Committee:

- **Carroll County Sheriff's Office**
- **Carroll County Department of Public Works**
- Carroll County Volunteer Emergency Services Association (CCVESA)
- Maryland State Police (MSP) Westminster Barrack
- Carroll County Public Schools
- Westminster Police Department
- MDOT State Highway Administration District 7

- Traffic and Highway Safety Advisory Board:

- **Harford County Sheriff's Office**
- Harford County Council
- Harford County Department of Public Works
- Maryland State Police Bel Air & JFK Barracks
- MDOT State Highway Administration District 4
- Harford County Office of Drug Control Policy
- Harford County Youth Commission
- Harford County Health Department
- Harford County Public Schools Administration
- Mothers Against Drunk Drivers (MADD)
- MDOT MVA Highway Safety Office
- Aberdeen, Bel Air, & Havre de Grace Police
- State Delegation
- Motor Vehicle Insurance Industry Representative
- Department of Emergency Services
- Citizens

- Steering Committee:

- **Howard County Office of Transportation**
- Howard County Department of Public Works
- Howard County Police Department
- Howard County Fire Department
- Howard County Department of Planning and Zoning
- Howard County Public Schools
- Howard County Health Department
- MDOT State Highway Administration District 7



- Steering Committee:
 - **Anne Arundel County Department of Public Works**
 - Maryland State Police (MSP)
 - Anne Arundel County Police Department
 - MDOT State Highway Administration District 5



- Toward Zero Baltimore:
 - **Baltimore City Department of Transportation**
 - Baltimore City Police Department
 - Baltimore City Public Schools
 - Baltimore City Fire Department



- Steering Committee:
 - **Baltimore County Department of Public Works**
 - Baltimore County Police Department
 - Baltimore County Public Schools



- Steering Committee:
 - **Queen Anne's County Department of Public Works**
 - Queen Anne's County Sheriff's Office
 - Queen Anne's County Board of Commissioners

For More Information

Cindy Burch | Transportation Planner - Safety
410-732-0500 x1051 | cburch@baltometro.org | www.baltometro.org

