

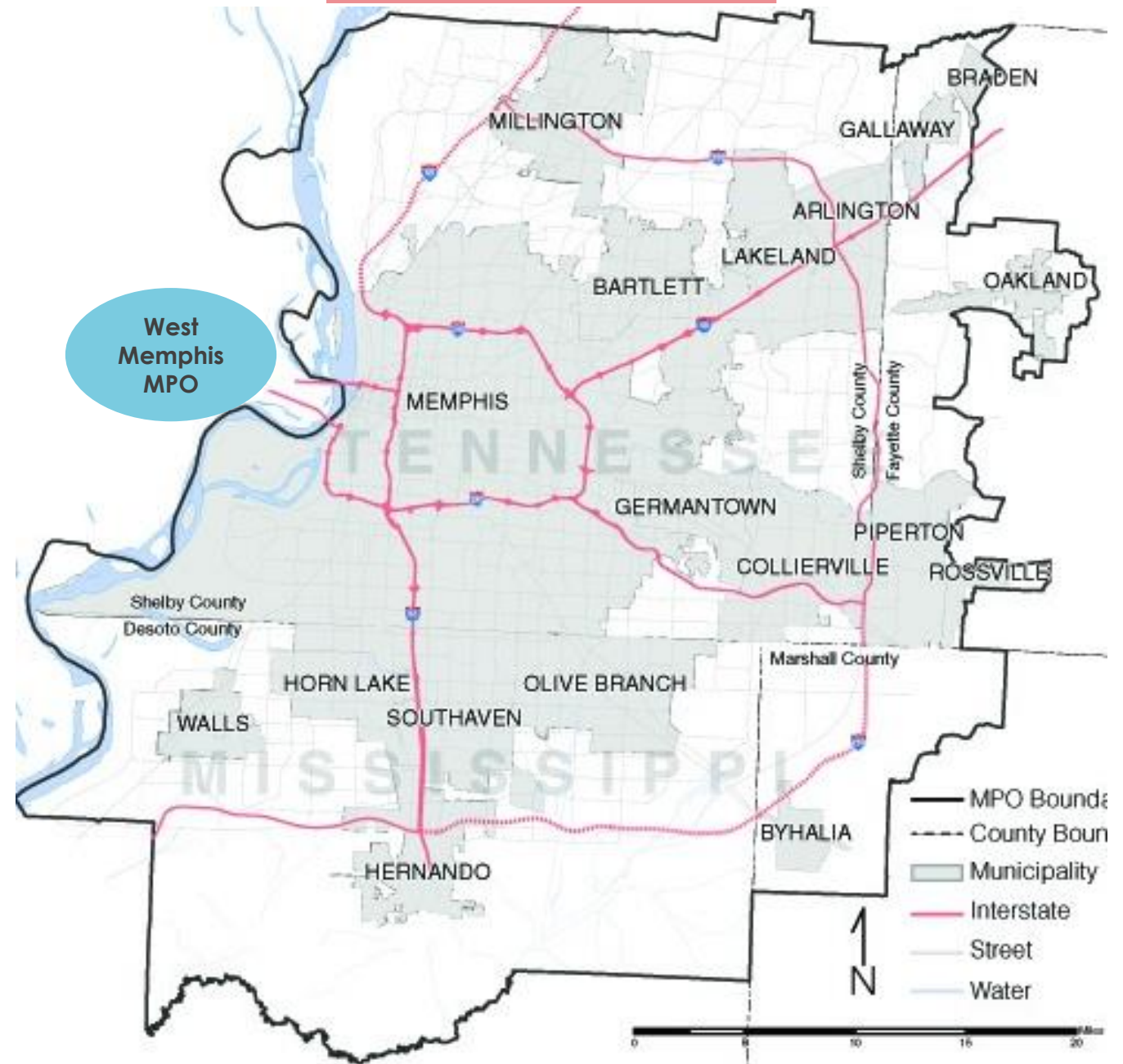
# Greater Memphis Regional Freight Plan

Date: October 18, 2017



# About Memphis MPO

- Bi- State MPO – **TN and MS**
  - **Planning area:** 2 full counties and 2 partial counties
- Coordination with West Memphis MPO, AR
- Transit – Covers 2 States – TN and AR
- Population approx. **1.1 million**
- Employment – **1 in 4** in transportation and warehouse sector



# About Memphis MPO – Freight Overview

## 4 R's

### ROADS



### RIVER

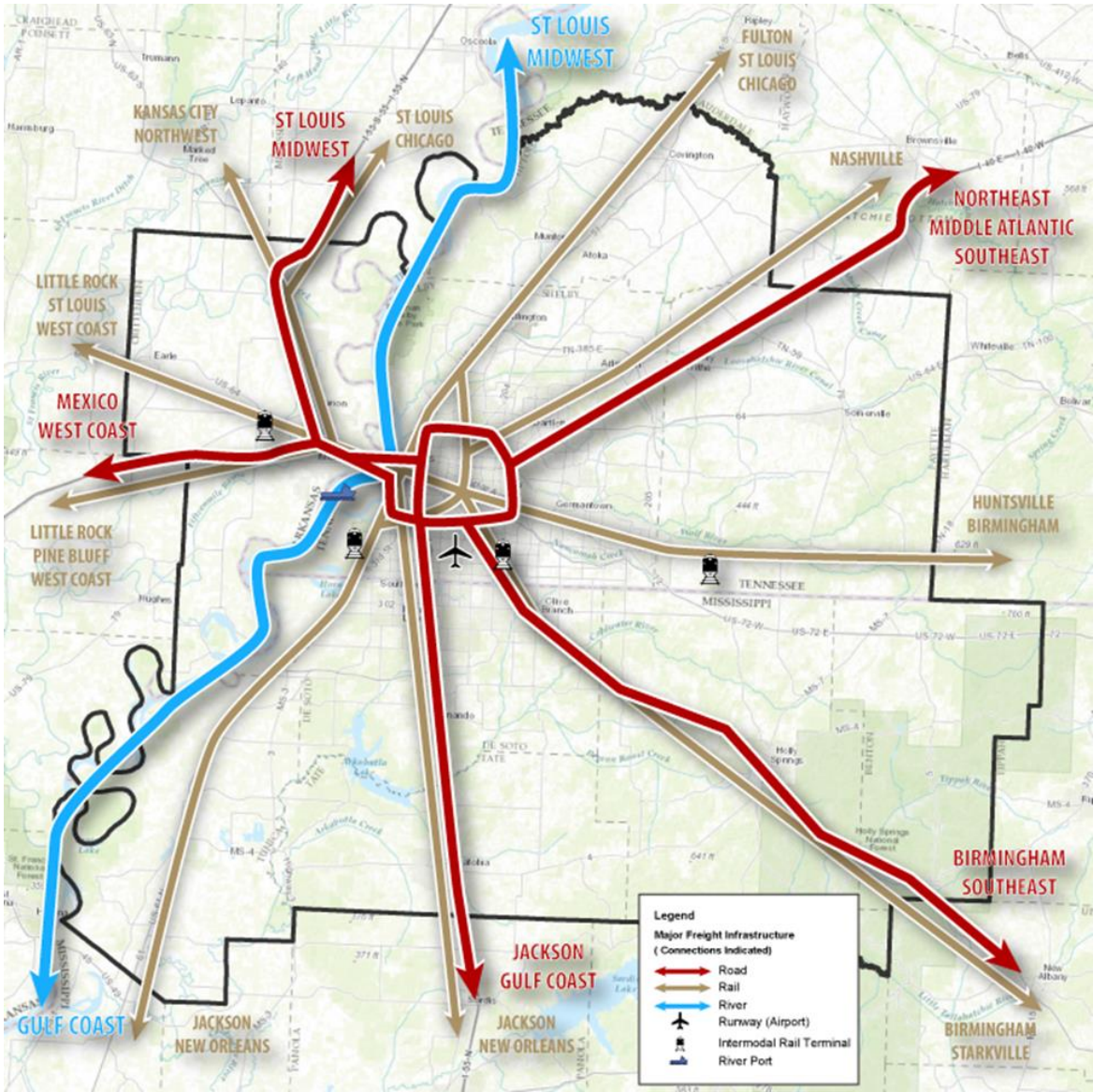
**5th**  
Largest Inland Port

### RAIL

5 class 1's railroads  
with over **\$400 million invested** in  
last few years

### RUNWAY

**Busiest** cargo  
airport in  
N. America



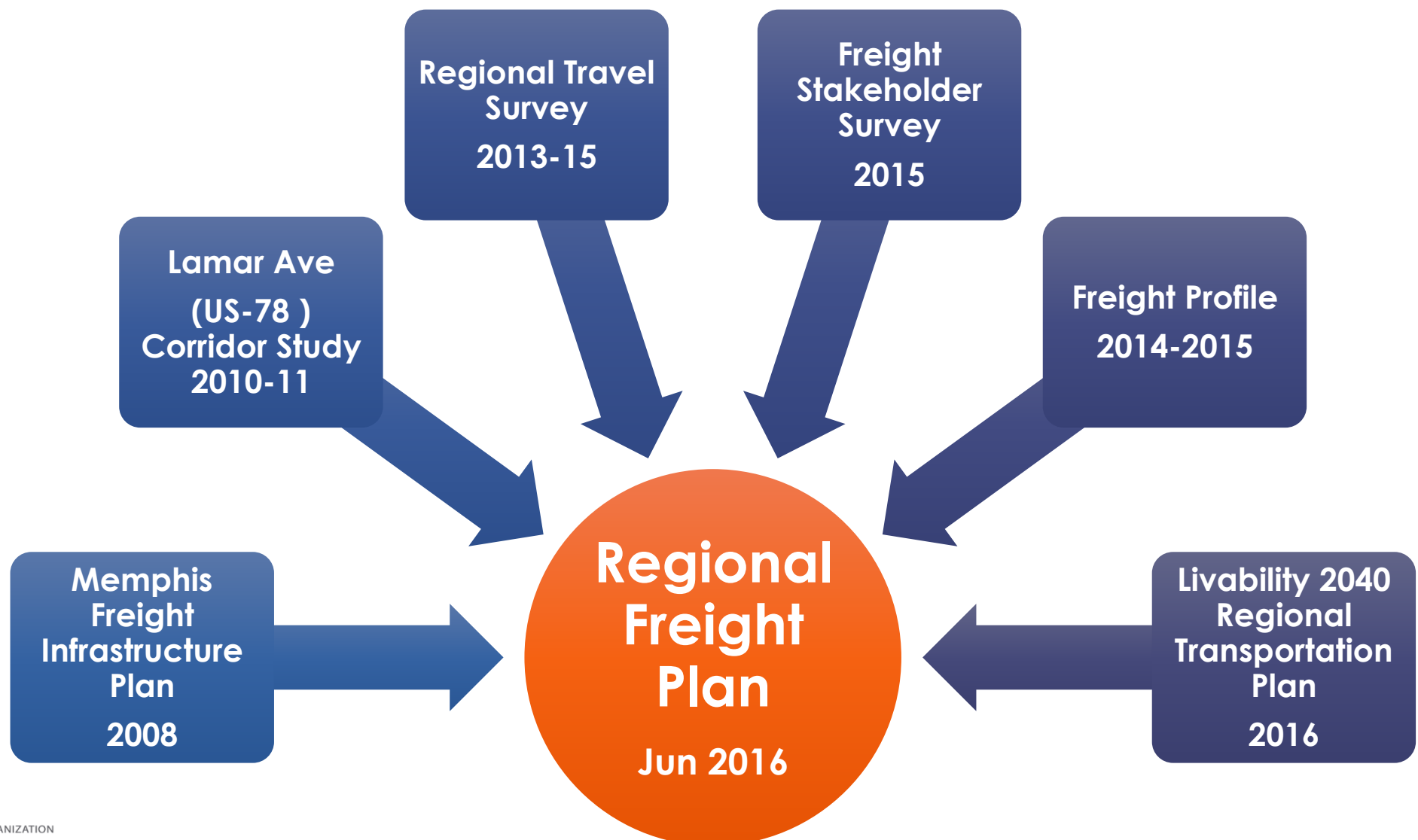


# About Memphis MPO – Freight Advisory Comm.

- **2013** – Restructuring of the Committee
  - Conducted a FHWA Peer Exchange
    - Washington DC
    - Chicago
    - Atlanta
    - Cincinnati
  - Membership – **Tri-State**
    - Chair – Policy Board Member (elected official)
    - Vice-Chair – FAC Member (private sector)

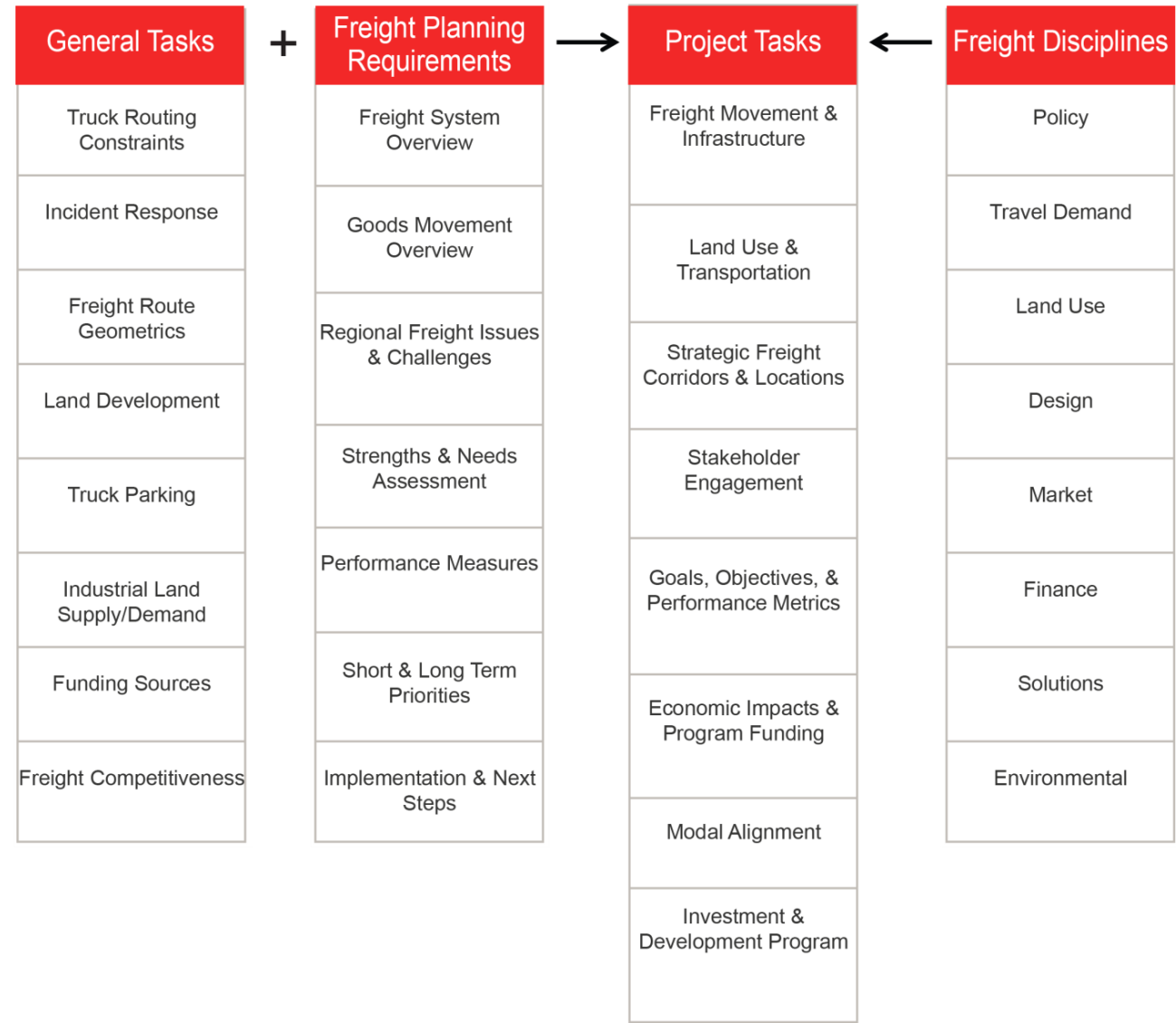


# Regional Freight Plan

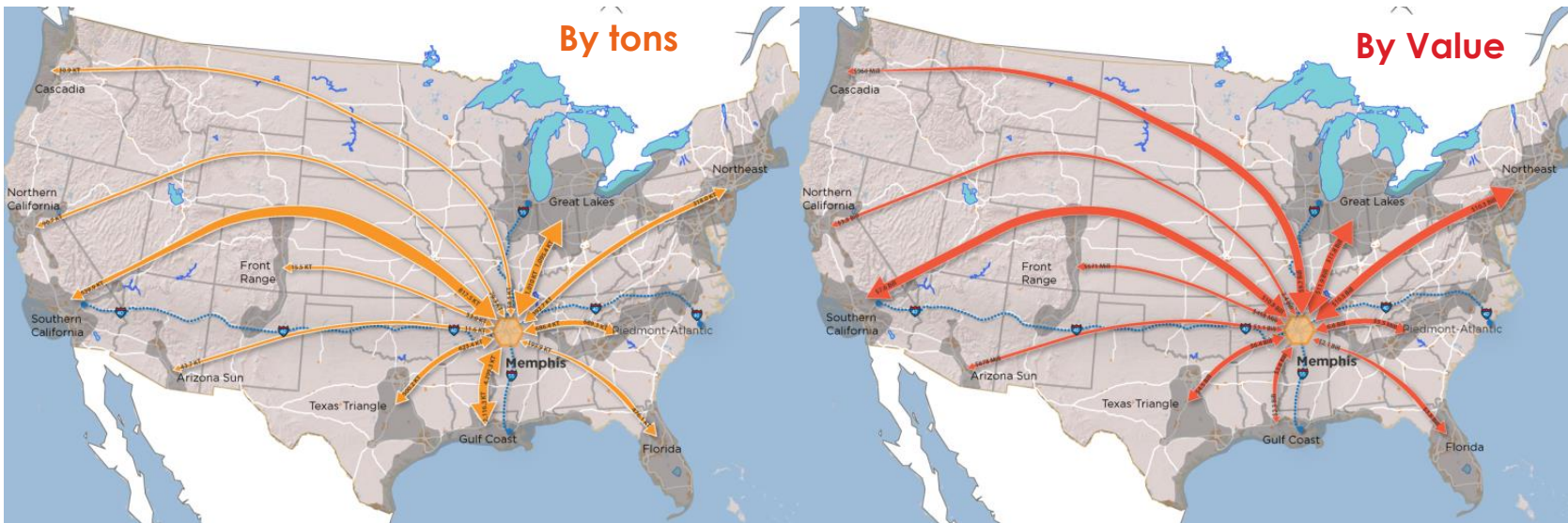


# Regional Freight Plan - Approach

- Leveraging Previous Studies/ Plans
- Urban and Rural alignment
- Land Use
- Regional Connections across US
- **Peer Cities:** El Paso, Oklahoma City, Tulsa, Kansas City, St. Louis, Minneapolis, Louisville, Cincinnati and Nashville
- Management Strategies for through traffic
- Alignment with Arkansas
- Adoption- November 2017

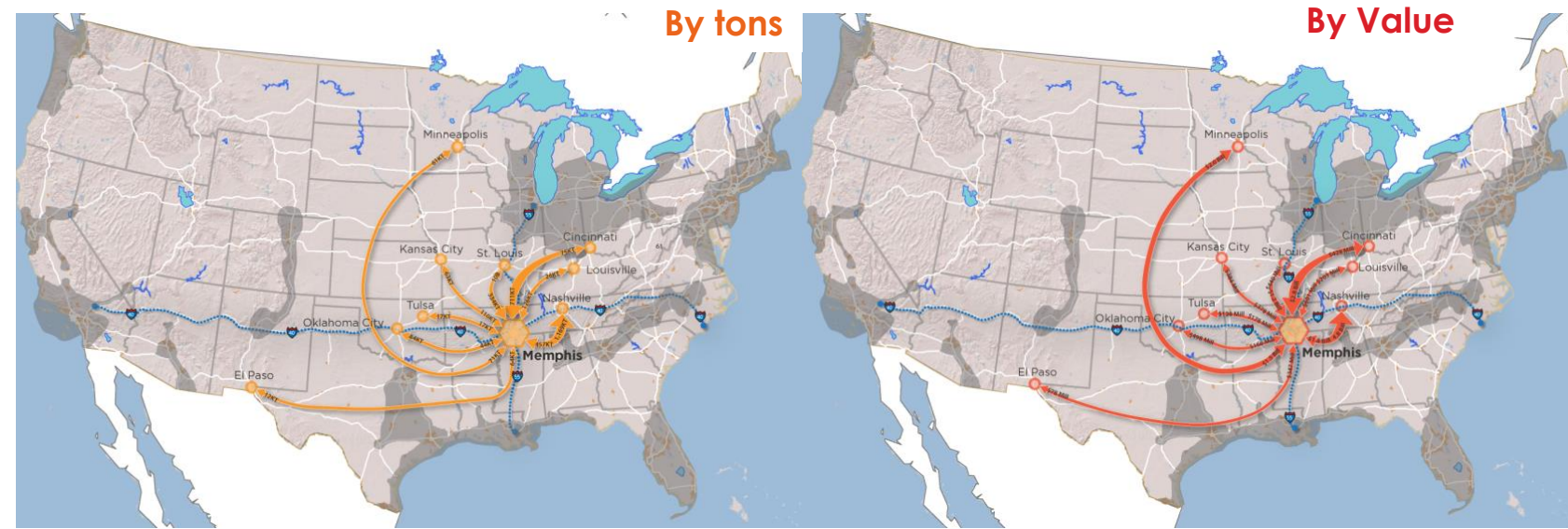


# Regional Freight Plan – National Level



Mode	% of Tonnage	% of Value
Roadway	93%	66%
Rail	5%	1%
River	2%	<1%
Runway	<1%	33%
Total	100%	100%

Commodity	% of Total (weight)	Commodity	% of Total (value)
Coal-n.e.c.	34.1%	Electronics	18.2%
Other foodstuffs	8.1%	Pharmaceuticals	15.5%
Gasoline	5.4%	Precision instruments	9.0%
Cereal grains	5.3%	Machinery	6.7%
Nonmetal min. prods.	5.0%	Motorized vehicles	6.0%
Total Top 10	75.2%	Total Top 10	75.3%

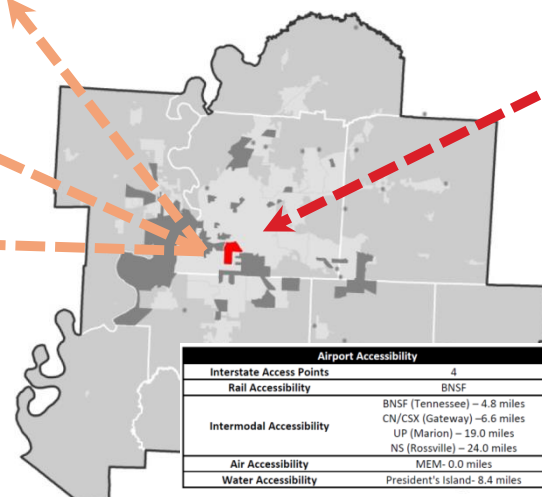
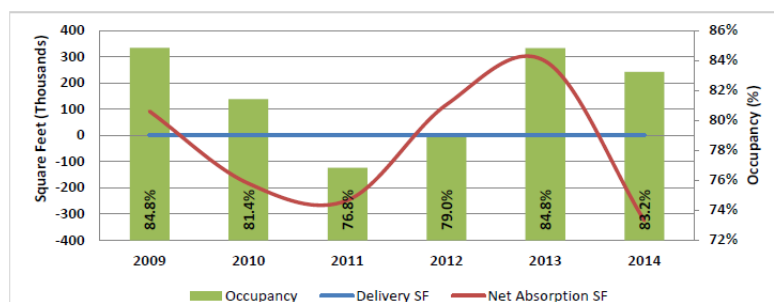
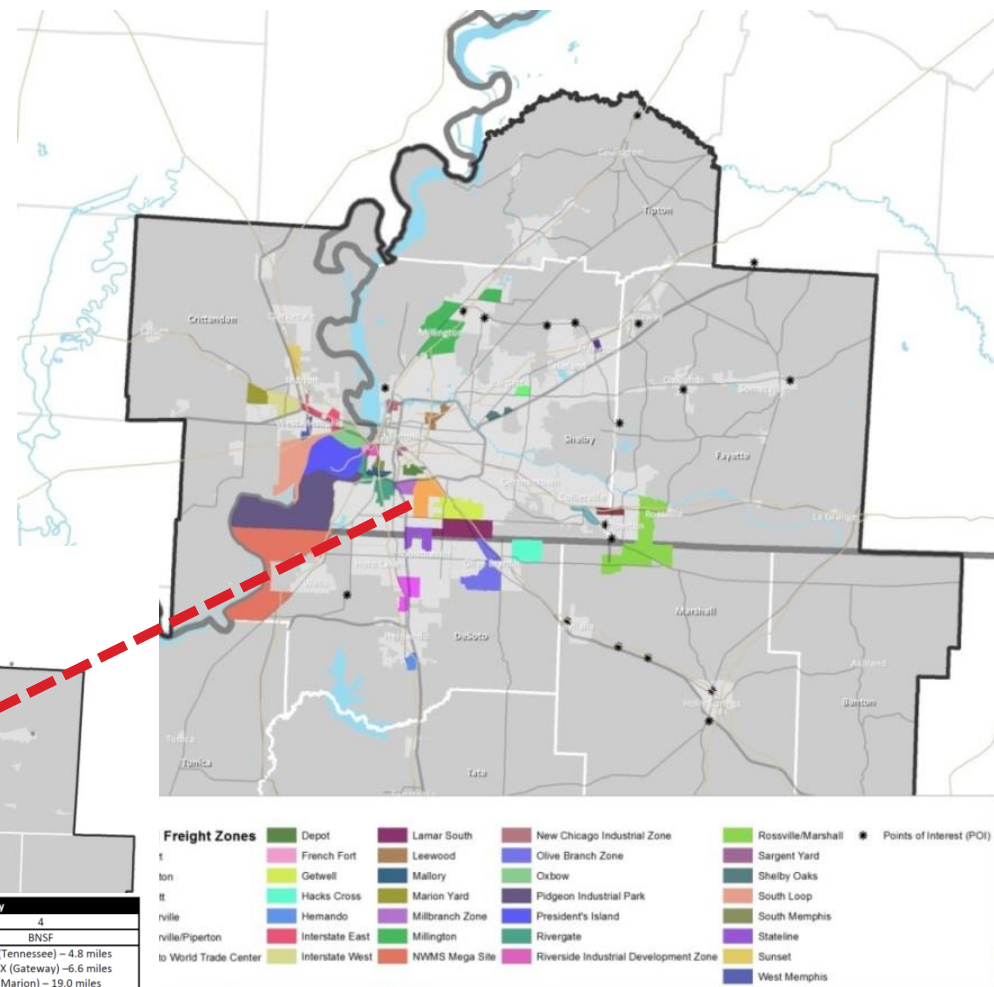
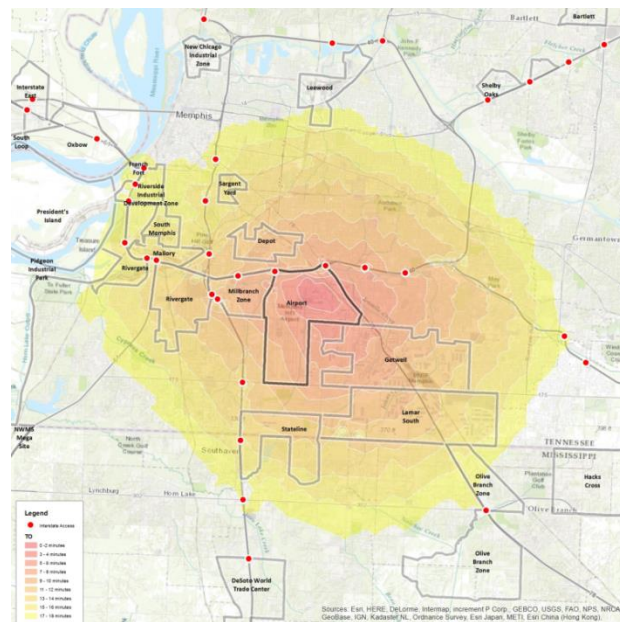
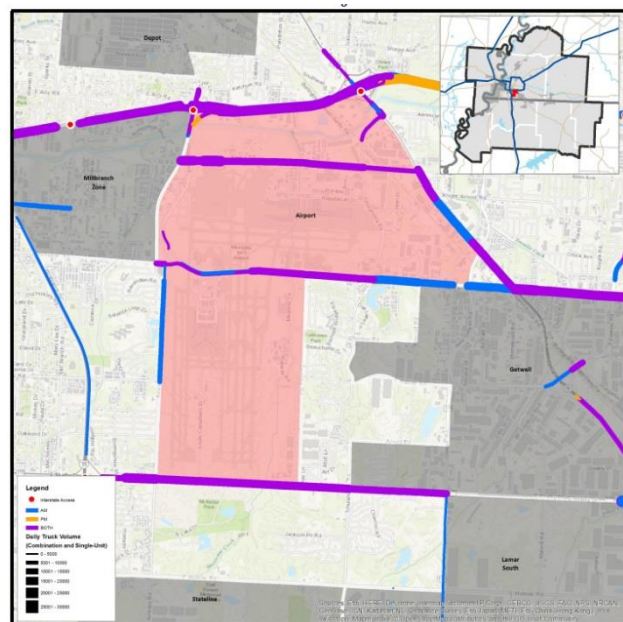






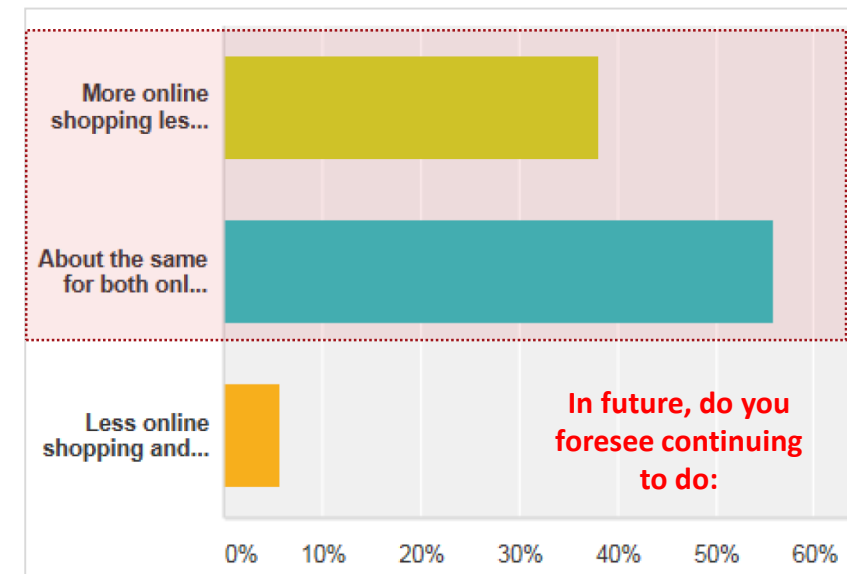
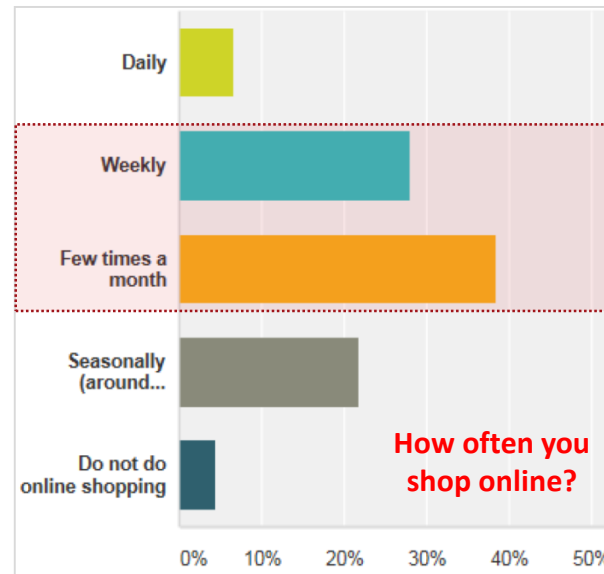
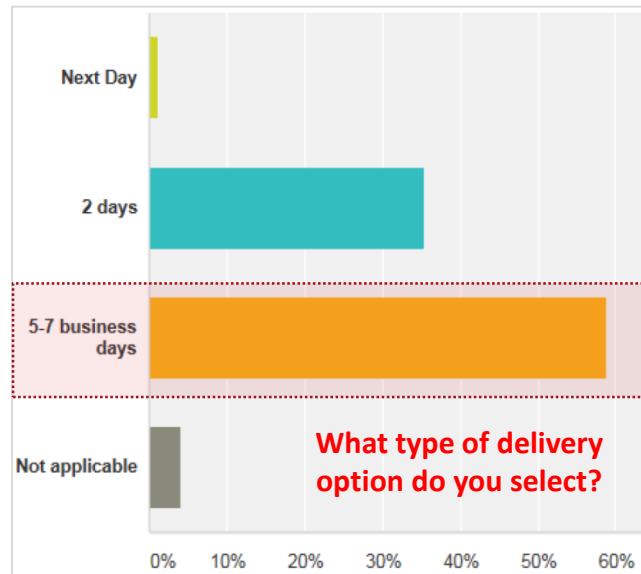


# Regional Freight Plan- Sub-Regional Level



# Regional Freight Plan - Outreach

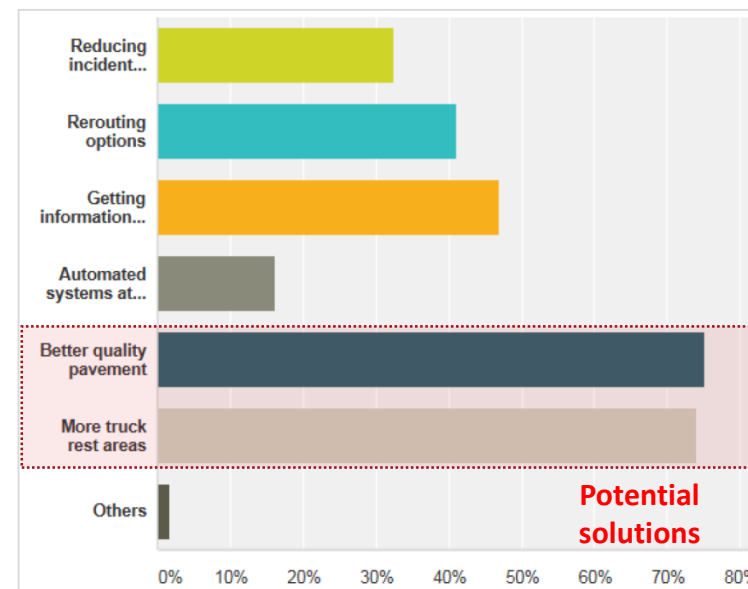
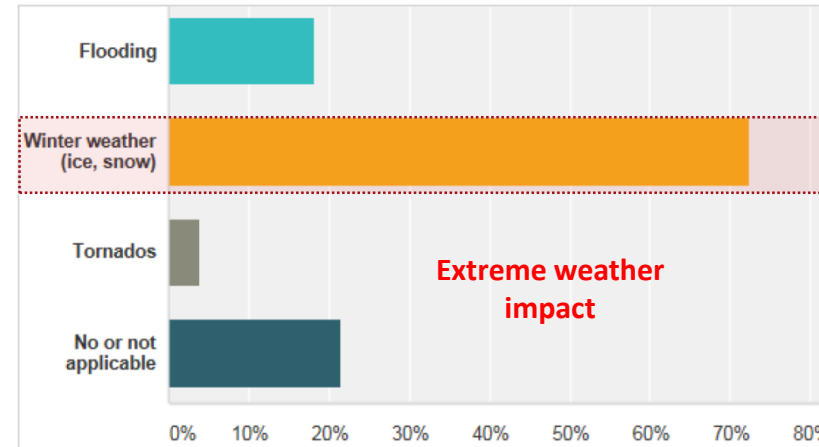
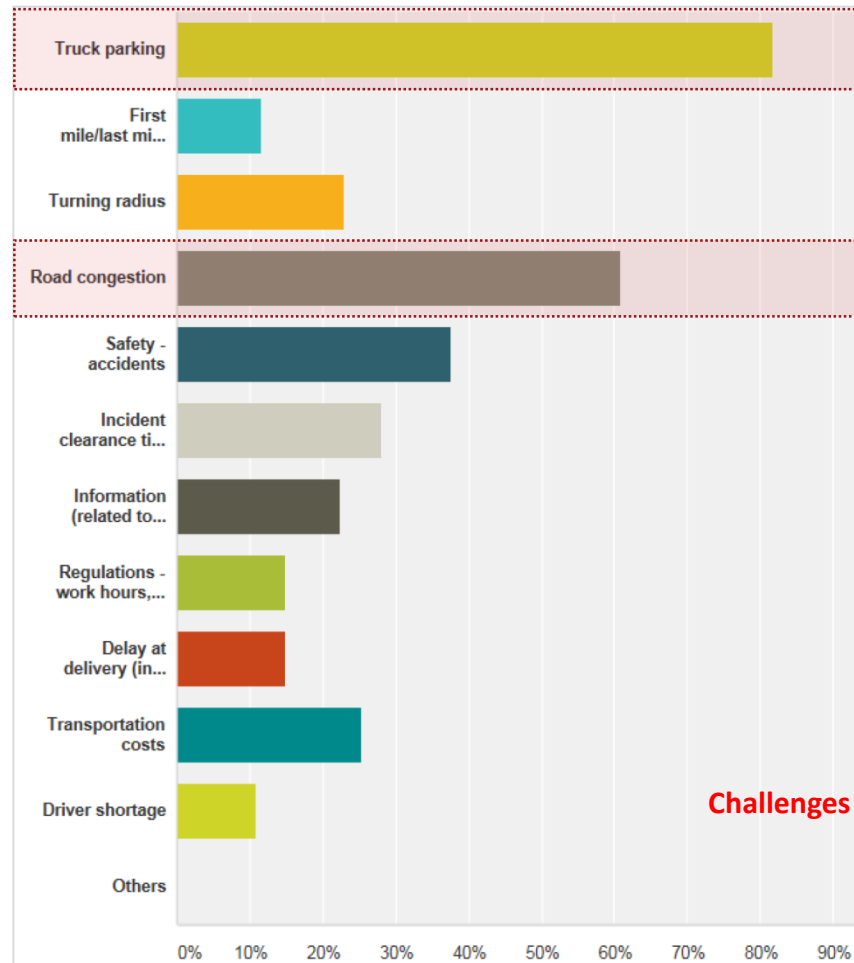
- 11 Question - Public Online Survey – **400 responses**



**91.5 %** responded that freight is important for the local/  
regional economy

# Regional Freight Plan - Outreach

- 8 Question - Truckers survey - “Man on the Street” - **294 responses**





# Regional Freight Plan –Issues

## • Freight Movement

- Address needs of critical freight corridors
  - Capacity
  - Non-recurring Congestion and Safety Incidents
  - Bridges
  - Rail Investment
- Truck parking
- Truck Routing
  - Through the Region
  - Between Local/Delivery Sites and Interstate/Freeway
- Operational and Geometric Deficiencies

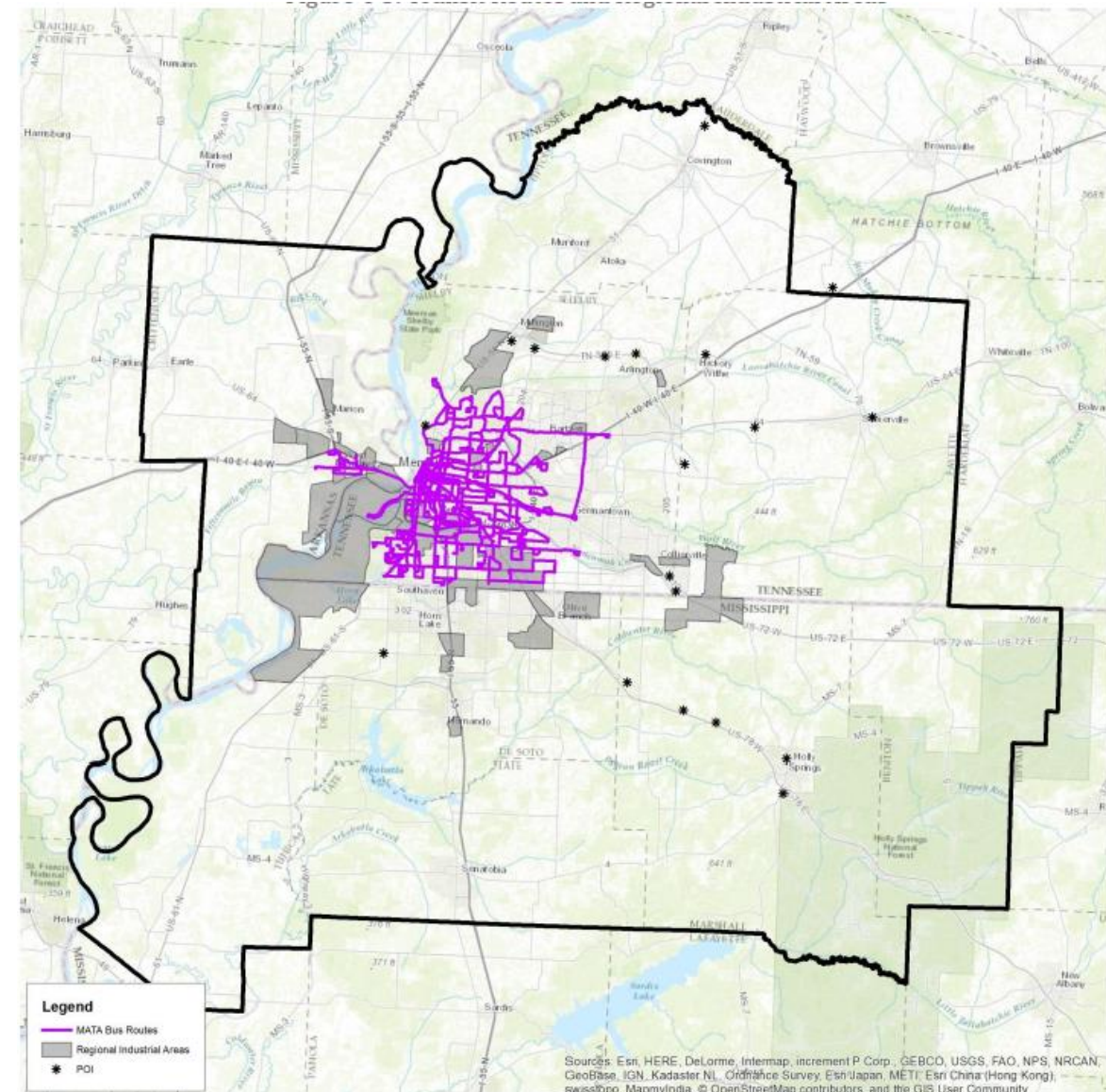
## • Workforce Issues

- Disconnect between employment needs and skills
- Jobs access/mobility issues

## • Economic Development

- Attracting manufacturing is a challenge
- Cooperation with Arkansas and Mississippi

## • Port/Airport



# Regional Freight Plan - Recommendations

- **Potential Program(s) of Work**

- Coordination of freight movement on various network
- Use of ITS solutions for traffic management and wayfinding system

- **Potential Policies**

- Companies could make efforts to research and invest in travel demand management (TDM) strategies that provide mobility options both to and from the worksite
- Leverage TDOT's and MDOT's efforts and initiatives for transportation demand management (TDM) to the freight sector, with continued participation by private sector
- Develop Strategy for Addressing Funding of Big Ticket Road Infrastructure Projects
- Address Provision of Additional Truck Parking

# Questions and Answers





Ms. Pragati Srivastava, AICP

Director, Memphis MPO

[Pragati.Srivastava@memphistn.gov](mailto:Pragati.Srivastava@memphistn.gov)

[www.memphismpo.org](http://www.memphismpo.org)

