



Implementing Eco-Logical

2013 AMPO National Conference
Portland, Oregon

Elizabeth Whitaker, AICP
Senior Transportation Planner
North Central Texas Council of Governments



Regional Perspective

Population

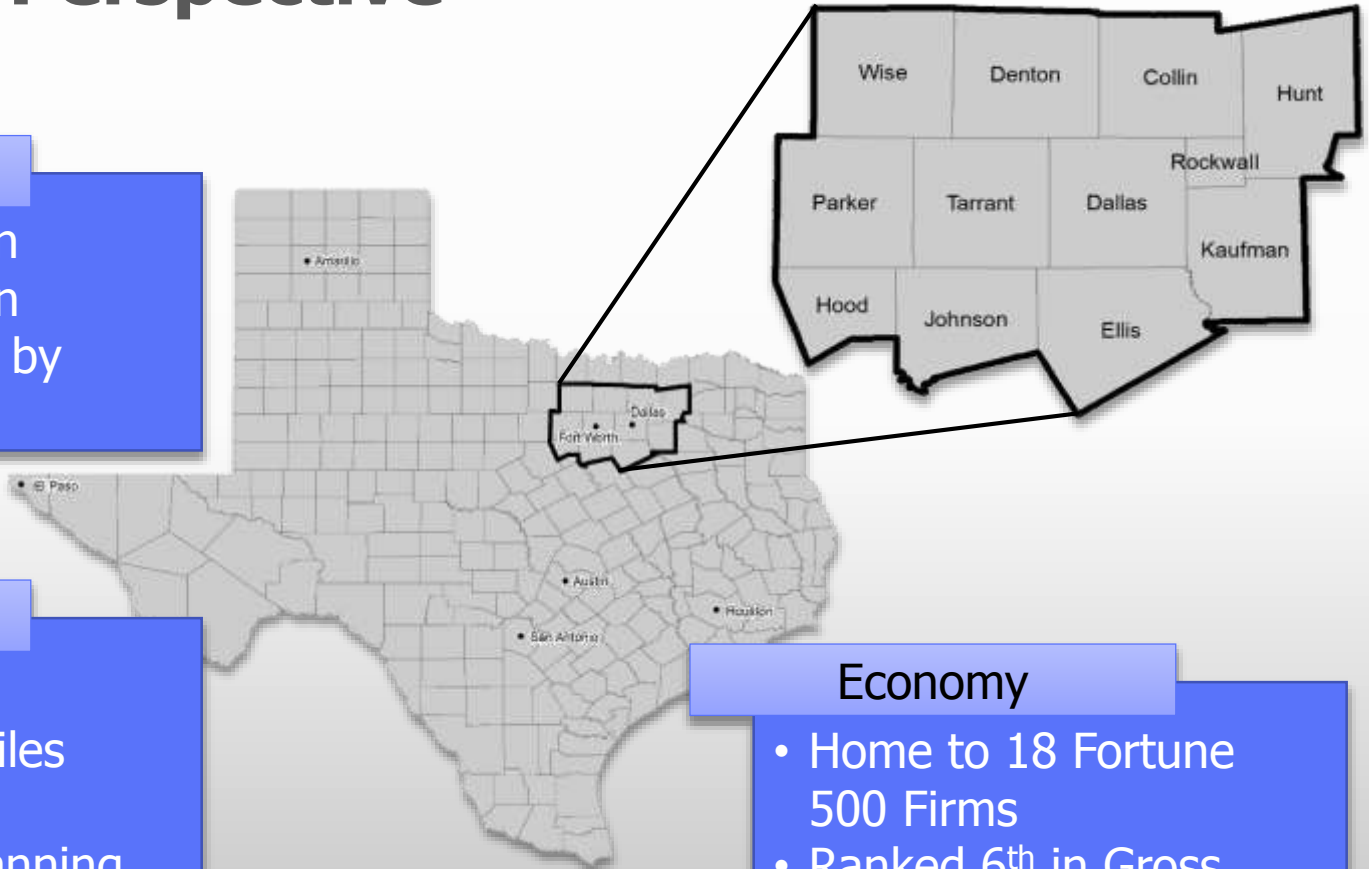
- 2012: 6.7 million
- 2035: 9.8 million
- 4th Largest MSA by Population

Area

- 12 counties
- 9,441 square miles
- 2nd Largest Metropolitan Planning Area

Economy

- Home to 18 Fortune 500 Firms
- Ranked 6th in Gross Metropolitan Product





DFW Long-Range Planning Context

Needs Exceed
Available Revenue

Can't Build Our Way
Out of Congestion

Use Sustainable
Development to
Reduce System
Demand & Provide
Multimodal Options

Emphasis on
Environmental and
Quality of Life Issues

Maximize Existing
System

Invest Strategically in
Infrastructure



Planning and Environmental Linkages

Planning and Environmental Linkages

Transportation Resource Agency Consultation and Environmental Streamlining (TRACES)

2008 FHWA Eco-Logical Grant

Regional Ecosystem Framework (REF)

Integration into Mobility 2035





Vital Ecosystem Information Layers (VEIL)

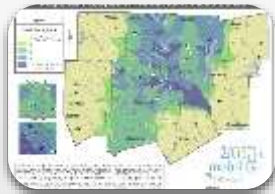
- First Iteration of REF
- Subwatershed Approach
- Composite of 10 Layers



Natural Areas



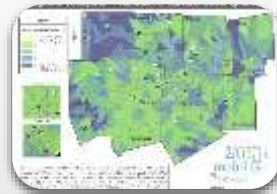
Wildlife Habitat



Flood Zones



Impaired Water Segments



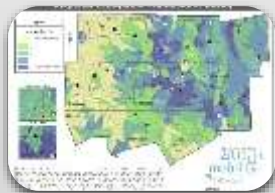
Surface Water Quantity



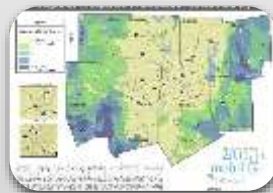
Wetlands



Diversity



Rarity



Sustainability

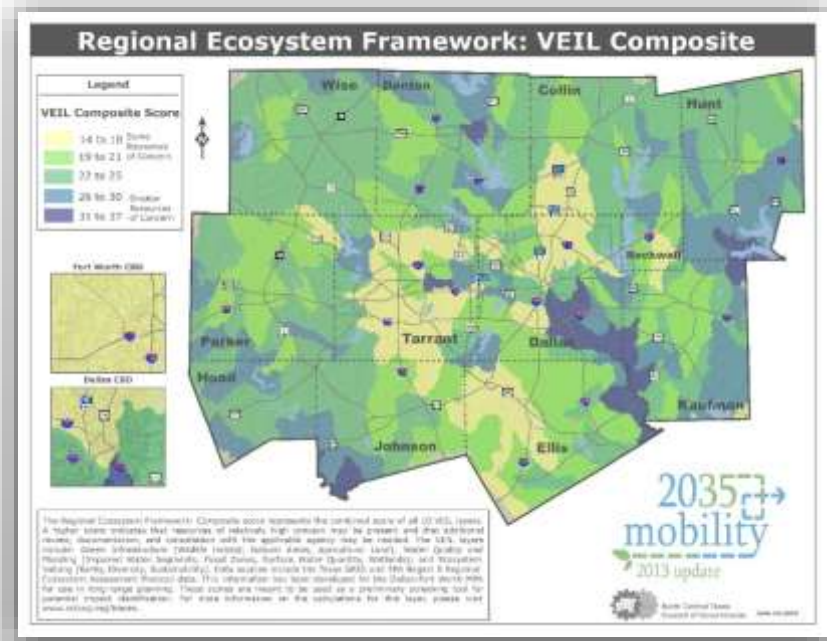


Agricultural Lands



Regional Ecosystem Framework

- Incorporated into Mobility 2035
 - First MTP for DFW that Explicitly Incorporated and Evaluated Environmental Considerations



Roadway Corridor Fact Sheet 32
US 175

Project Description

The expansion project on US 175, the CA Hawn Freeway, consists of the widening from the existing six lanes to eight freeway lanes between SH 210 and IH 20 in southeast Dallas. The western end of this corridor will link with the planned new connection to IH 45 included as part of the S.M. Wright Parkway project and will also provide continuity with the planned Trinity Parkway.

Corridor Information

ROUTE	LIMITS	COST
US 175	SH 210 to IH 20	\$100,000,000

Land Use

- Residential: 35.0%
- Commercial/Industrial: 13.2%
- Infrastructure: 2.6%
- Vacant/Parkland: 44.2%
- Other: 3.0%

Demographic Information Within One Mile of Corridor

POPULATION PROFILE	MAJOR EMPLOYERS
Population: 45,184	None
Number of Households: 13,850	Source: NCTCOG Employment Database, 2007
Population Below Poverty: 37%	
Population over 60: 7%	
African American: 37%	
Hispanic: 39%	
Asian/Pacific Islander: 0%	
American Indian/Alaska Native: 0%	
Native: 0%	
Total Minority: 33%	

Legislative Districts Within One Mile of Corridor

UNITED STATES HOUSE OF REPRESENTATIVES	TEXAS SENATE	TEXAS HOUSE OF REPRESENTATIVES
Jill Harmaning-5	Bob Deuel-2	Eric Johnson-100
Eddie Bernice Johnson-32	Boyer Walker-23	Nelson Dilling-109
		Total Rank: 1-25
		Only District: 113

NCTCOG Regional Ecosystem Framework Score* (Range: 14 - 37)

STREAMWASHED NAME	REG COMPOSITE SCORE
City of Dallas-White Rock Creek	24
Military Creek-Parkway Slough	29
Five Mile Creek-Trinity River	22
Pleasant Creek-Trinity River	22

Ecological Importance in Corridor

2013 update

Source: Texas A&M, 2007/08a (from A21) Modified



Implementation Efforts

- Received SHRP 2 Lead Adopter Incentive Implementation Assistance Funds
- Strong Focus on Mitigation Opportunities



Update REF and Identify Mitigation Focus Areas

Apply REF to a Corridor Feasibility Study

Implement a Regional Shared Value Mitigation Program



Update REF and Identify Mitigation Focus Areas

- Re-Engage Resource Agencies and Update VEIL
- Identify Priority Subwatersheds
- Identify Candidate Mitigation and Enhancement Areas
- Identify Suitable Sites for Potential Mitigation Banks



Apply REF to Corridor Feasibility Study



Create Corridor Conservation and Restoration/Enhancement Vision

Recommend Improvements to REF Based on Real World Experience

Create Regional Process for Using REF in Corridor Studies



Regional Shared Value Mitigation Program

- Program Purpose is to Systematically Focus Funds to Address and Ensure Conservation, Preservation, and Sustainability of Region's Natural Resources.



Create Mitigation Project Database

Prioritize Shared Value Mitigation Projects

Provide Feedback to the REF

Reserve Funds for Pilot Projects



Contact Information

Dan Lamers, P.E., Senior Program Manager

817.695.9263, dlamers@nctcog.org

Tamara Cook, AICP, Principal Transportation Planner

817.608.2395, tcCook@nctcog.org

Elizabeth Whitaker, AICP, Senior Transportation
Planner

817.608.2324, ewhitaker@nctcog.org