

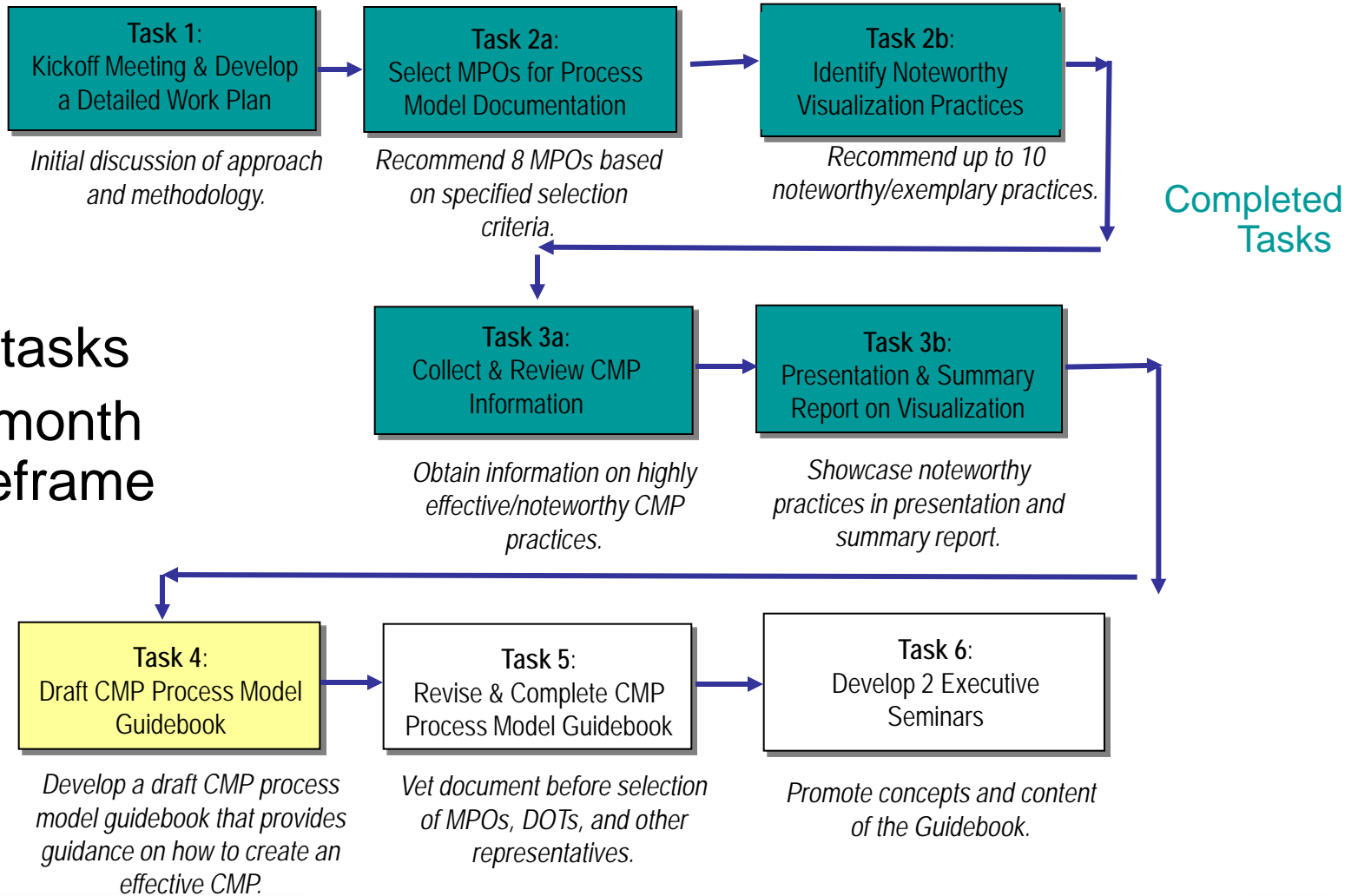


Congestion Management Process A Guidance Document Status Update

**Boston, Massachusetts
July 2010**

**Mr. Egan Smith
FHWA, Office of Planning,
Environment & Realty**

Current Status



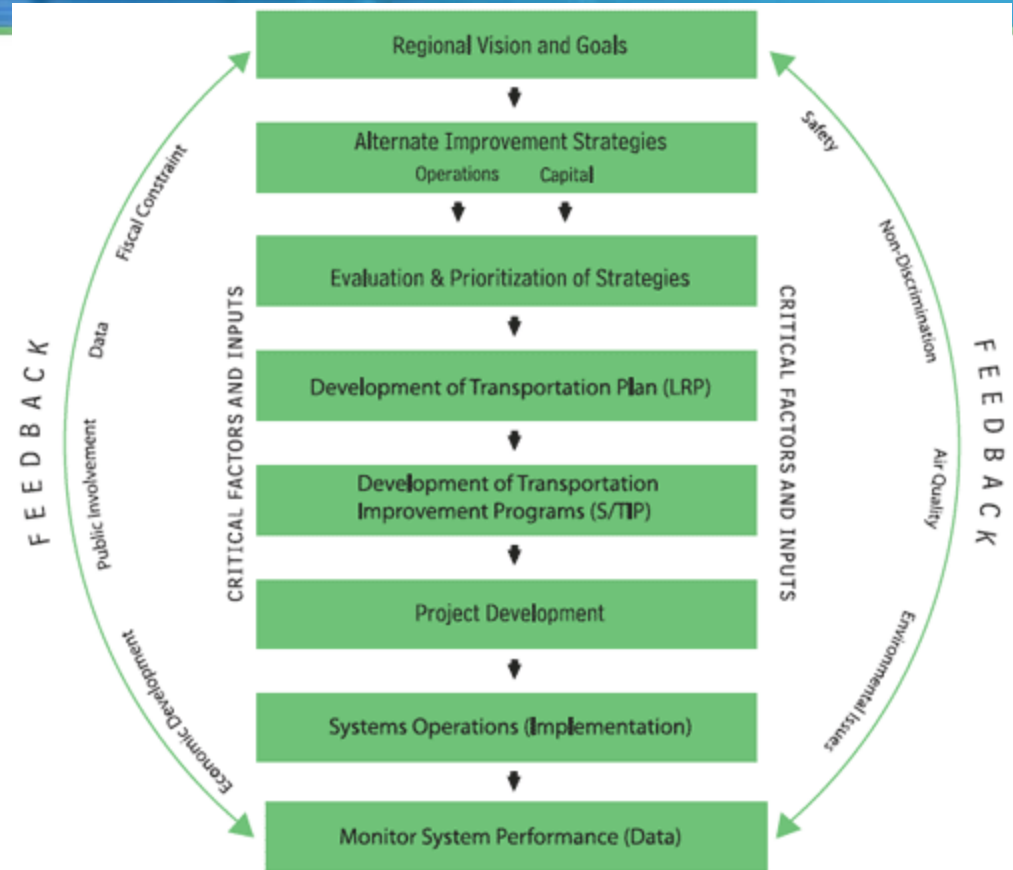
- Six tasks
- 14-month timeframe

Guidebook Outline

1-Introduction	1
1.1 - What is a CMP?	1
1.2 - History of the CMP	2
1.3 - Why is a CMP useful?	2
1.4 - What is the Purpose of this Guidebook?	4
1.5 - The CMP as an Integral Part of the Metropolitan Planning Process	5
2- Process Model	7
2.1 - Action 1: Develop Regional Objectives for Congestion Management	9
2.2 - Action 2: Define CMP Network	12
2.3 - Action 3: Develop Multimodal Performance Measures	14
2.4 - Action 4: Collect Data / Monitor System Performance	24
2.5 - Action 5: Analyze Congestion Problems and Needs	27
2.6 - Action 6: Identify and Assess CMP Strategies	28
2.7 - Action 7: Program and Implement CMP Strategies	33
2.8 - Action 8: Evaluate Strategy Effectiveness	35
3- The CMP within the Regional Transportation Planning Context	36
3.1 - Collaboration among Stakeholders	36
3.2 - Livability and Multimodal Considerations in the CMP	37
3.3 - SOV-Capacity Adding Projects and the Role of Demand Management and Operations Strategies	40
3.4 - Linkage to NEPA and the Project Development Process	41
3.5 - Documentation of the CMP	43
4 - Using Visualization as a Communication and Analysis Tool	44
4.1 - The Role of Visualizations in the CMP	44
4.2 - Data Used in Visualizations	45
4.3 - Visualization Methods Used in CMP Activities	45
4.4 - Lessons Learned on Effective Visualization	54
5. Conclusion	55
Appendix A – Legislative Language	57
Appendix B – Regulation	59
Appendix C - Case Study Reports	61

1. Introduction

- What is a CMP?
- History of the CMP
- Why is a CMP useful?
- What is the Purpose of this Guidebook?
- The CMP as an Integral Part of the Metropolitan Planning Process



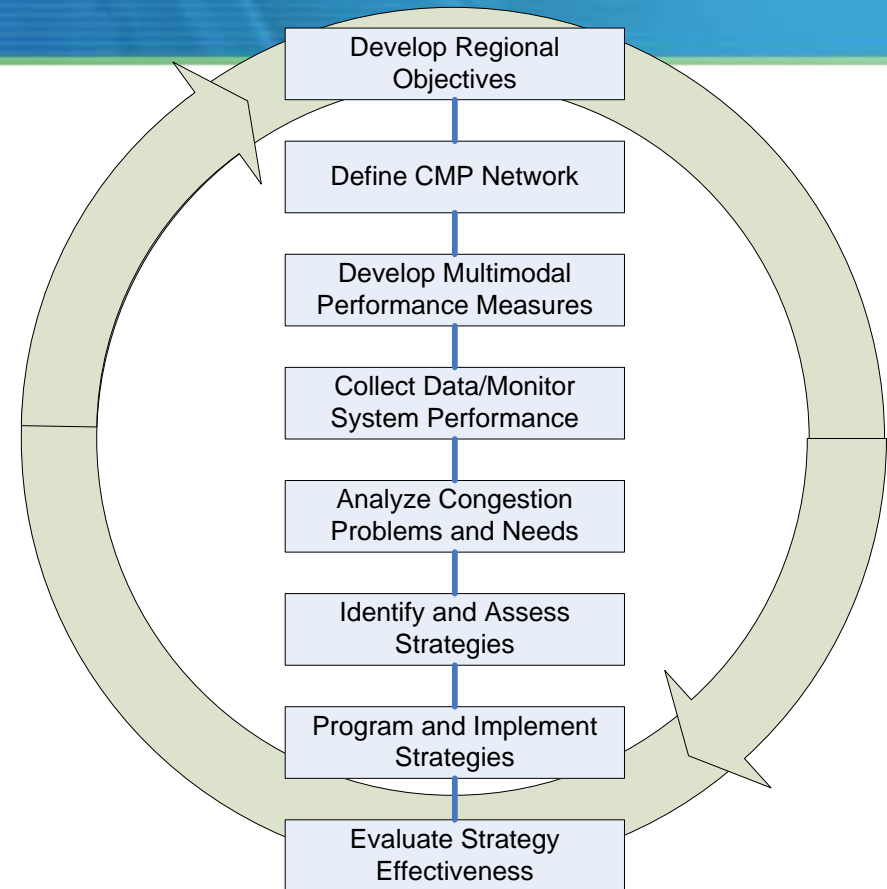
Have we clearly made the case for the value of the CMP?

Have we clearly described the role of the CMP in transportation planning?

Do the concepts of a performance-based approach, and a process integral to planning that accounts for livability considerations come through?

2. Process Model

- Eight Actions
 - Recognizes general sequence but also iterations and variations
 - Notes cyclical nature of process (related to planning process)
- For each action, guidebook notes:
 - Good practices
 - Case study examples



Do you agree with terminology “actions” vs. “steps”?

Are the actions clear and logical?

Are the case examples and resource information (e.g., examples of performance measures, data sources, etc.) helpful?

3. The CMP within the Regional Transportation Planning Context

- Collaboration among Stakeholders
- Livability and Multimodal Considerations
- SOV-Capacity Adding Projects and the Role of Demand Management and Operations Strategies
- Linkage to NEPA and Project Development Process
- Documentation of the CMP

Is the information provided sufficient?

This information is somewhat highlighted in the process model – is this the appropriate format for reiterating and expanding upon these topics?

4. Visualization as a Communication and Analysis Tool

- The Role of Visualizations in the CMP
- Data Used in Visualizations
- Visualization Methods Used in CMP Activities
 - Examples provided
- Lessons Learned on Effective Visualization

Is this the right level of information – not too little, not too much?

Task 4

- FHWA comments on draft guidebook – July 1
- Second draft guidebook – July 22

Task 5

- Select MPO review Committee July 23
- Web-based discussion group – Review Comments on Second Draft (August 9 – 12)
[Need to finalize date/time]

Questions for Consideration

- Have we clearly described the role of the CMP in transportation planning and the value of the CMP?
- Is the description of the eight “actions” clear, and consistent with elements of your CMP?
- Do you believe the content information (including case examples, samples of performance measures, etc.) in the draft guidebook will be helpful to MPOs in developing a more robust CMP?
- Was anything missing that you think would be important to add?



For More Information

- Contact:
 - *Egan Smith, FHWA-Planning,*
Egan.Smith@dot.gov, 202-366-6072

