



North Texas Regional TIM Program



2018 AMPO Annual Meeting

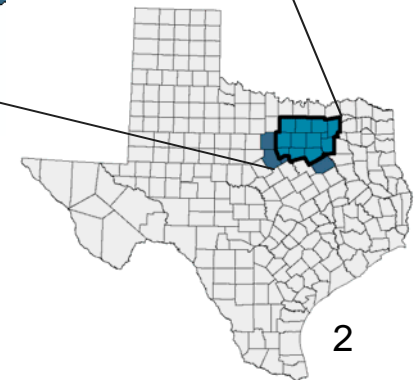
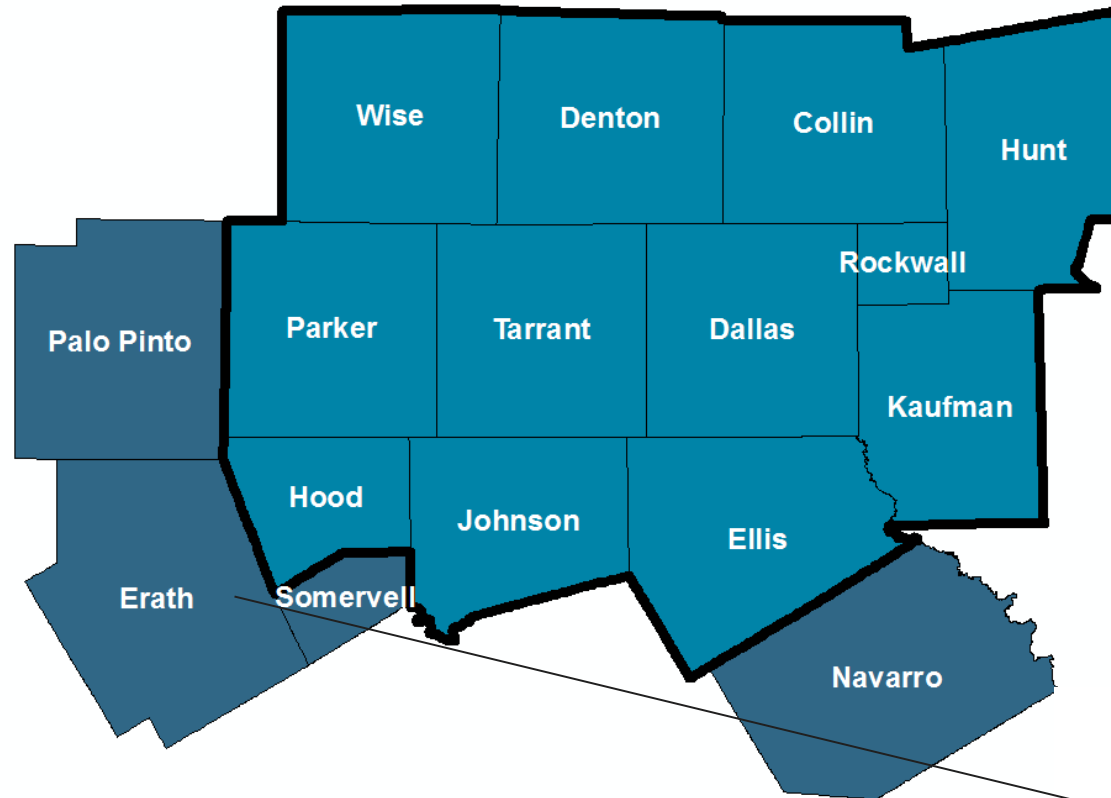
Natalie Bettger



September 26, 2018



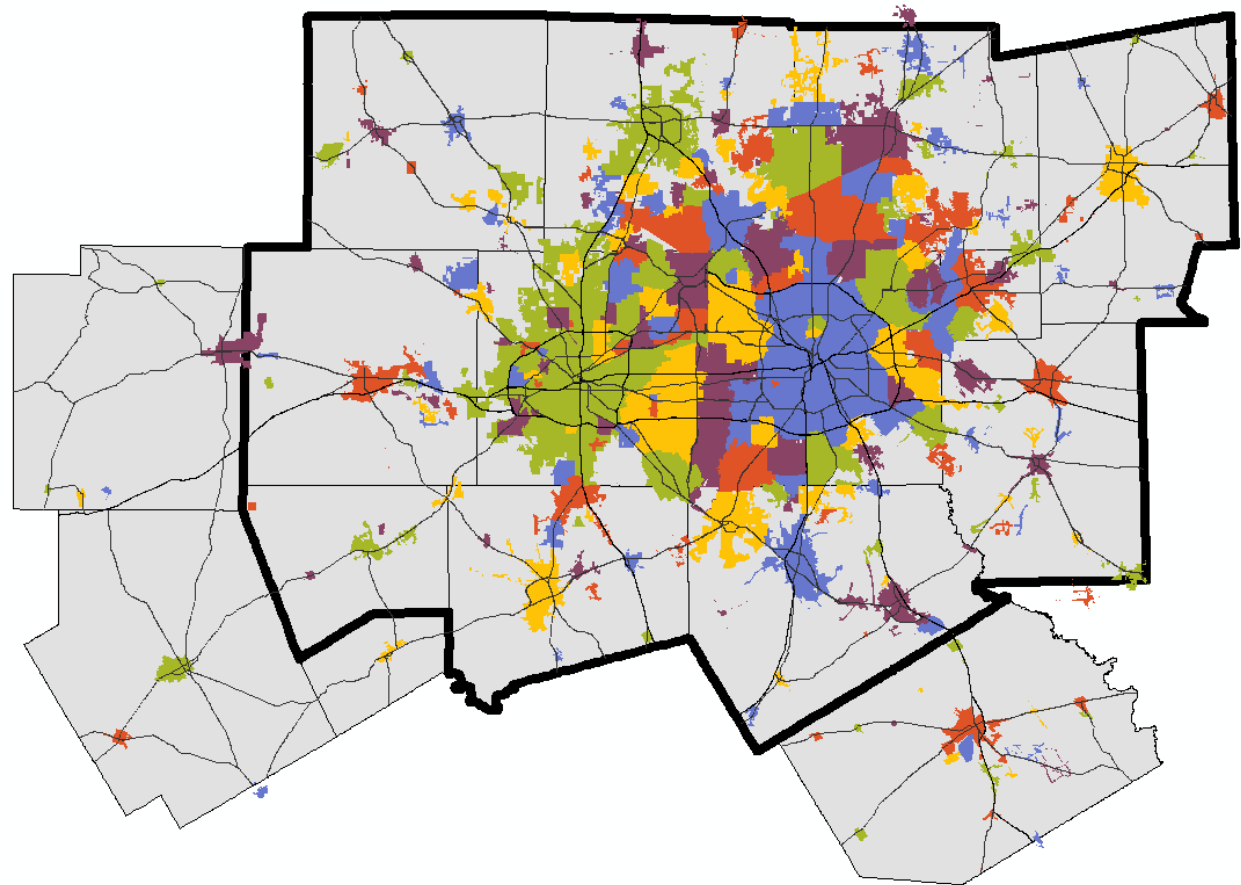
North Central Texas Council of Governments



Metropolitan Planning Area (MPA)
12 Counties = 9,441 sq. mi.

Land area larger than the states of New Hampshire,
New Jersey, Connecticut, Delaware, and Rhode Island.

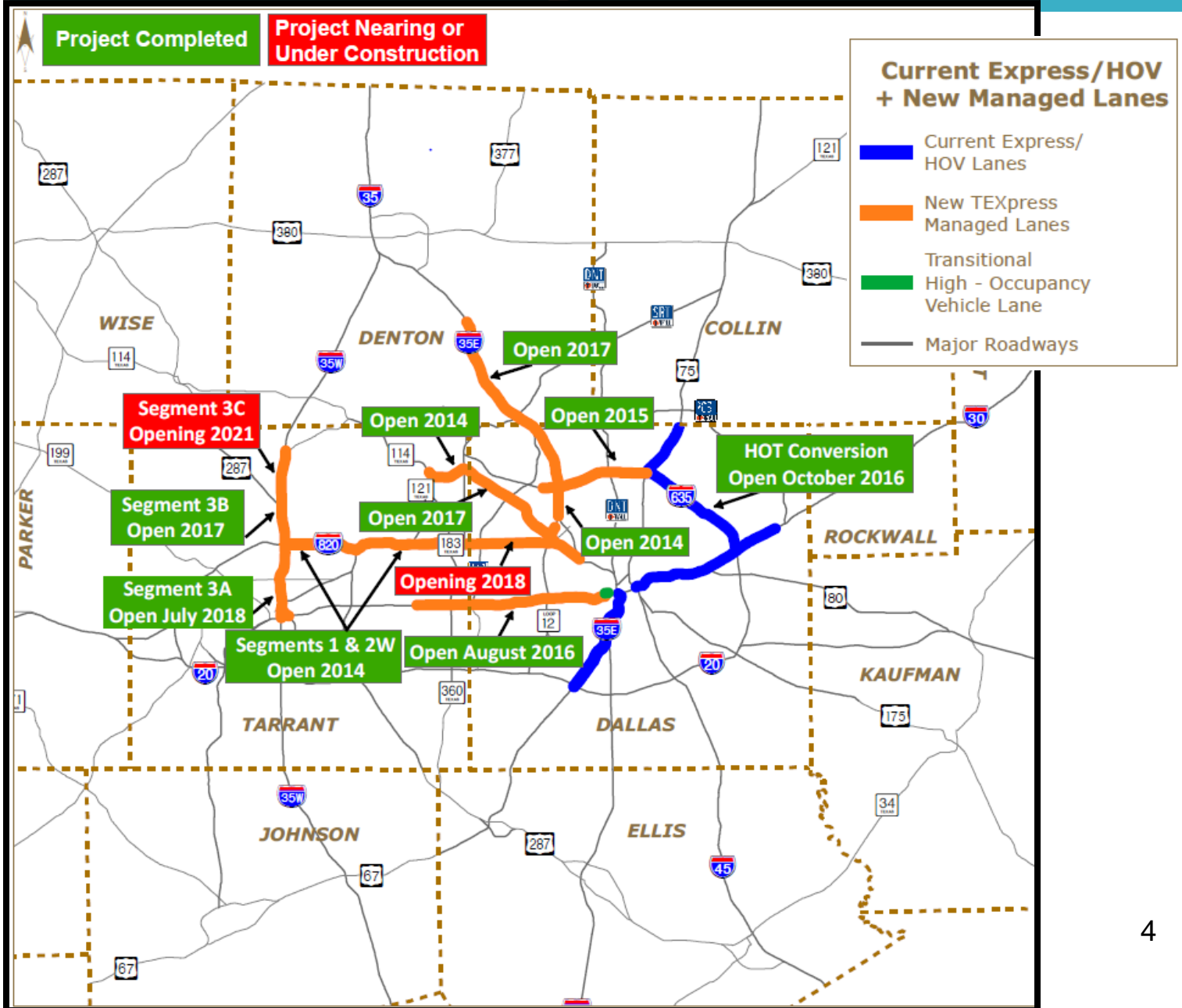
Metropolitan Planning Area



Metropolitan Planning Area (MPA)
209 cities
13 cities larger than 100,000 pop.

MPA Population
2017 Estimate = 7.2 million
2045 Forecast = 11.2 million

Managed Lanes



Overview



1. Policy/Resolution

2. Freeway Incident Management (FIM)
Training Program

- First Responder and Manager's Course
- Executive Level Course
- Photogrammetry Training Workshop

3. Performance Measures

4. Call for Projects

5. Working Groups/Task Force

TIM Resolution/Policy



- Resolution Supporting a Comprehensive, Coordinated, Interagency Approach to Freeway Incident Management (RTC Resolution R08-10)
- Originally Adopted in March 2003; Updated in October 2008; MTP Policy Bundle 2016
- Major Components Include Support of:
 - Quick Detection and Clearance of Traffic Incidents
 - Participation in FIM Training
 - Enhanced GIS-Based Incident Location System
 - Uniform Policy that Allows Removal of Personal Property that Blocks Roadway or Endangers Public
 - Local Adoption of a Towing Ordinance with Time Specifications
 - Adoption of Operational Strategies that Promote Quick Clearance Practices Prior to Major Road Improvements

First Responders and Manager's Course



- NCTCOG TIM Course is Equivalent to the SHRP2 National TIM Program Course
- Texas Commission on Fire Protection(TCFP) Rule 435.29 Course Equivalent a Requirement for Fire Personnel
- Course Offered Six Times per Year
- Two-Day Course
- Everyday Responders
- Course Offered at Both Onsite and Offsite Locations
- **2,786 Students Between February 2003 and September 2017**
- Students Eligible to Receive TCOLE Credits, Fire Commission Credits, and Emergency Medical Services 7 (EMS) Continuing Education Units (CEUs)

First Executive Level

- NCTCOG TIM Course is Equivalent to the SHRP2 National TIM Program Course
- Course Offered Twice per Year
- Two-Hour Course
- Decision Makers
- **741 Executives between February 2005 and May 2017**
- Students Eligible to Receive TCOLE Credits, Fire Commission Credits, and Emergency Medical Services (EMS) Continuing Education Units (CEUs)



Photogrammetry Training Workshop



- Basic and Advanced Training Opportunities
 - Basic: Five-Day Training, Includes Equipment
 - **“Training Only” Option**, Does Not Include Equipment
 - Advanced: Two-Day Follow-up Training
- Training Offered Twice per Year

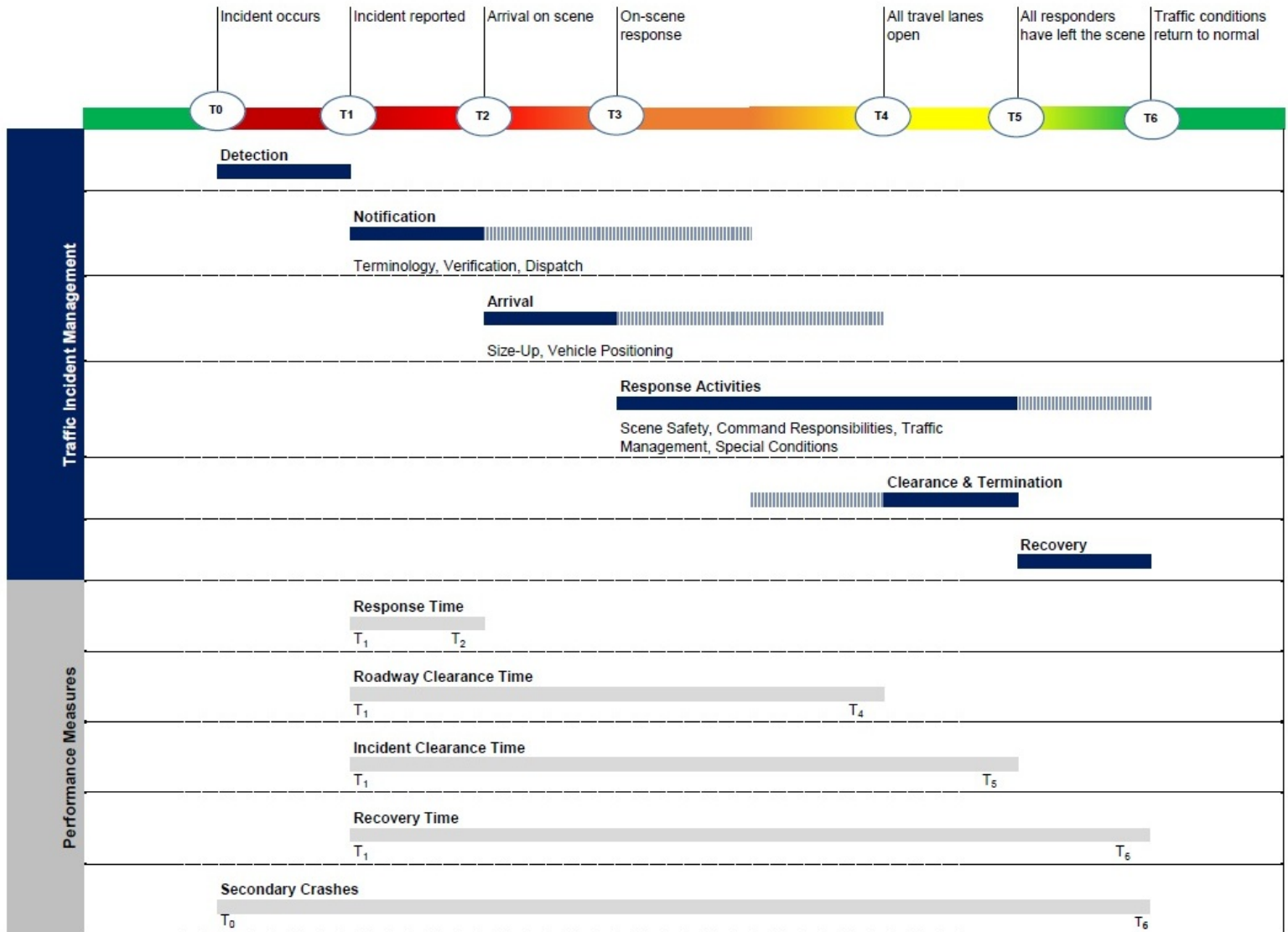
iWitness™ Photogrammetry Training Equipment Provided



- Equipment Provided to Each Officer “At No Cost”
 - Digital Camera
 - Special Photogrammetric Markers
 - iWitness™ Close-Range Photogrammetry Software System
- If Approved to Attend, Participating Agencies Agree to Utilize the Equipment Provided or it Must be Returned to NCTCOG



Major Stages in Incident Management



Incident Management Equipment Purchase Call for Projects



- Purpose: To Assist Partner Agencies in Purchasing Equipment and Technology that Aid in Quick Incident Clearance and Mitigation
- Supports Current Incident Management Training Recommendation to Use Best Practice Equipment and Technology
- Emphasizes Importance of Implementing Incident Management Strategies and Training
- First 2015; Second Fall 2018 ~ \$2 Million

Corridor-Based Working Groups



- IH 30 Corridor
- Police, Fire, Traffic Operations, Transit, Tow Truck Operators
- Meet Monthly
- Focus
 - Existing Systems and Operations
 - Operational Scenarios
 - Issues and Needs (Technology, Resources and Policy)
- Challenges
 - Keeping Momentum

Area-Based Stakeholders



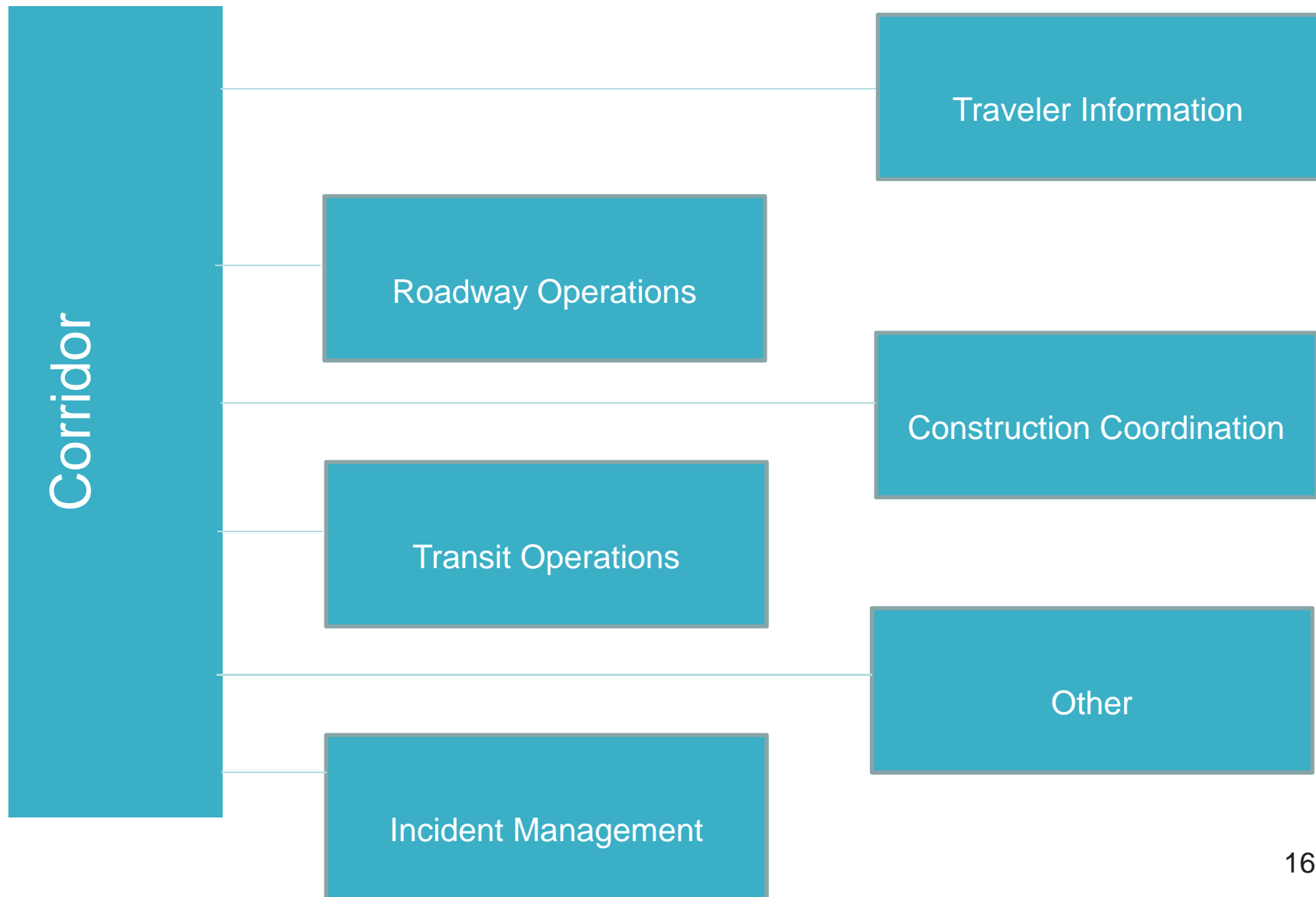
- North Dallas Area
- Police, Fire, Traffic Operations, Tow Truck Operators
- Meet Monthly
- Focus
 - Quick Clearance
 - Best Practices
 - Incident Review
 - Performance Measures
 - Standard Messages on DMS**Move Over, Steer It, Clear It**
- Challenges
 - Abandoned Vehicles
 - Reference Marking Signs in Depressed Freeways for 911 Calls

District-Based Stakeholders

- Texas Department of Transportation, Fort Worth District
 - Police, Fire, Traffic Operations, Tow Truck Operators
 - Meet Quarterly
 - Focus
 - Quick Clearance
 - Incident Review
 - Standard Messages on DMS
- ## Incidents
- Courtesy Patrol Support
 - Texas MUTCD Requirements
- Challenges
 - Large Group
 - CADD Information to Transportation Management Centers
 - Staging of Wreckers

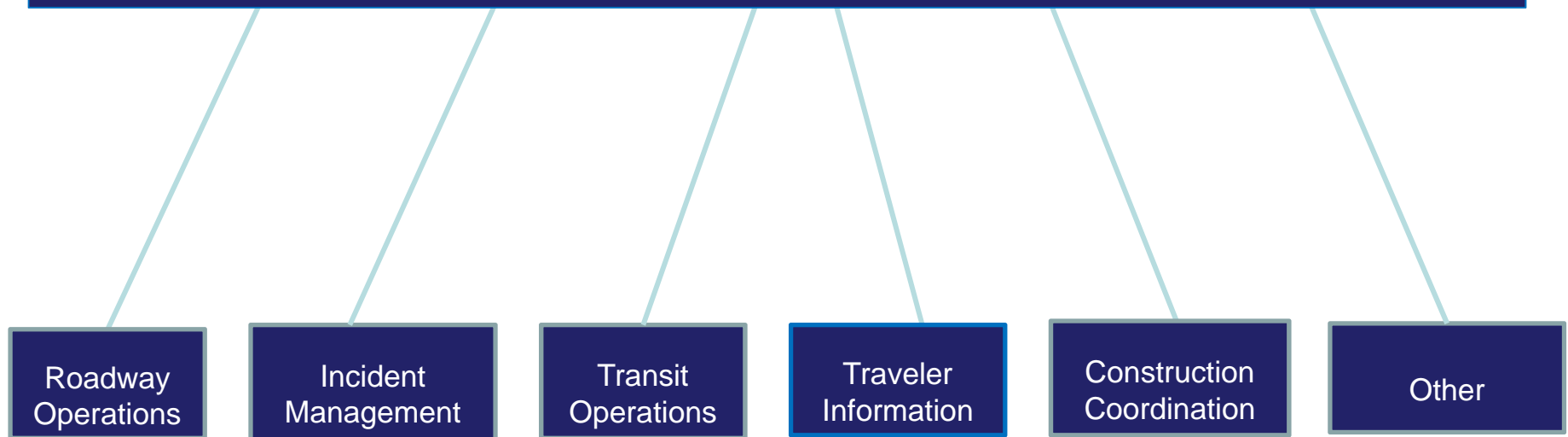


Individual Corridor Committee Structure



Committees Elevate to Policy Group

Regional Policy and Funding Group



Summary

- Training has Changed Mindset
- Funding Brings Agencies to the Table
- New Approach with Task Force
- Need More Consistency across Jurisdictional Lines/Operator Boundaries
 - Performance Measures
 - Abandoned Vehicles
 - Tow Truck Operators
 - Traffic Operations





Contact Information

Natalie Bettger
Sr. Program Manager
(817) 695-9280
nbettger@nctcog.org

www.nctcog.org/trans/cmp