

AMPO Survey of Planner Salaries

This survey was sent to all 340 MPOs on April 4, 2003, and received 129 responses. The responses came from MPOs of all sizes, from all regions of the country. Because it was difficult to generalize position titles, some respondents reported confusion when applying our categories to their MPO. In addition, many smaller MPOs don't have many of the positions included in the survey. Thus, some of the questions received very few responses and others produced questionable results. The results do, however, provide a useful framework for comparison of salaries among MPOs.

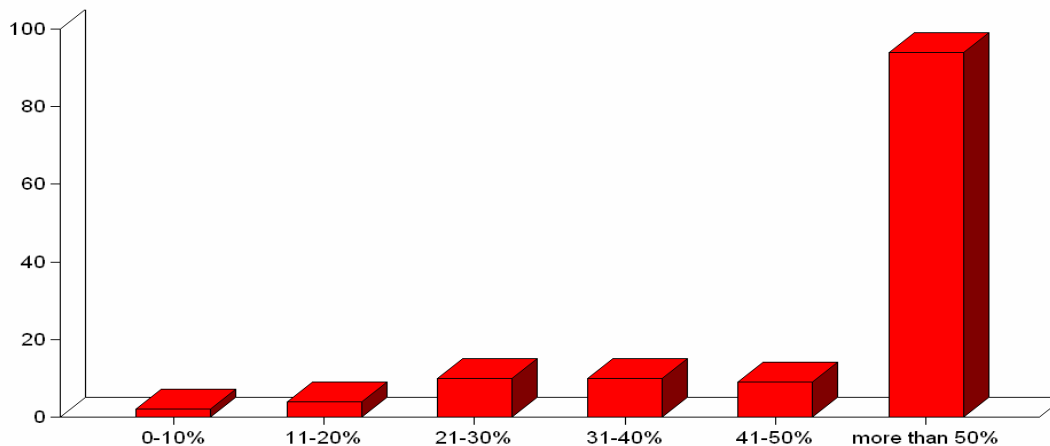
Results

What is the annual budget of your MPO?

- ? Mean: \$4,683,757
- ? Mean excluding two outliers: \$864,140
- ? Median: \$148,000

There was some confusion in the responses to this question. Respondents interpreted it differently: some only included PL funding, some had trouble disentangling MPO funding from that of the regional council, etc. Therefore these numbers are not accurate.

What percentage of your annual budget comes from federal funding?
(129 responses)



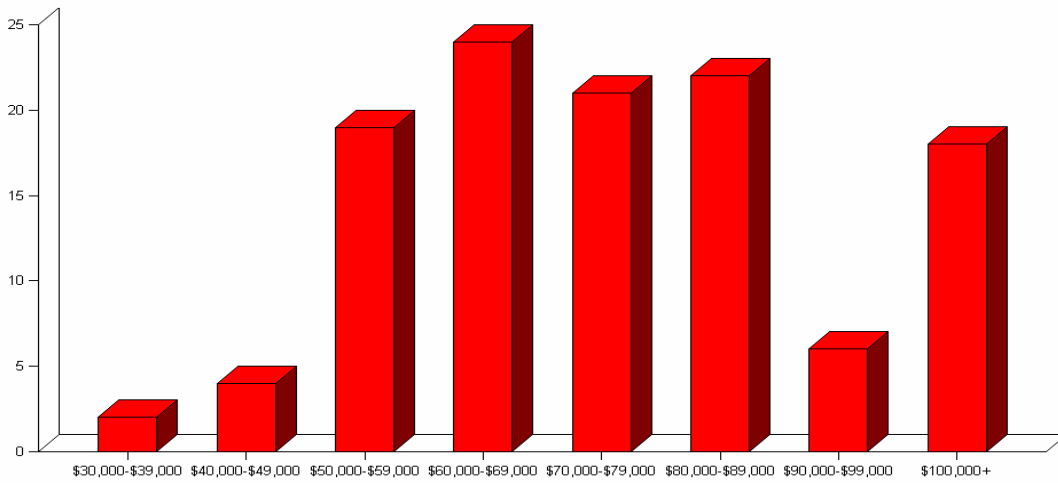
How many people are on your MPO's staff?

- ? Mean: 5
- ? Median: 15

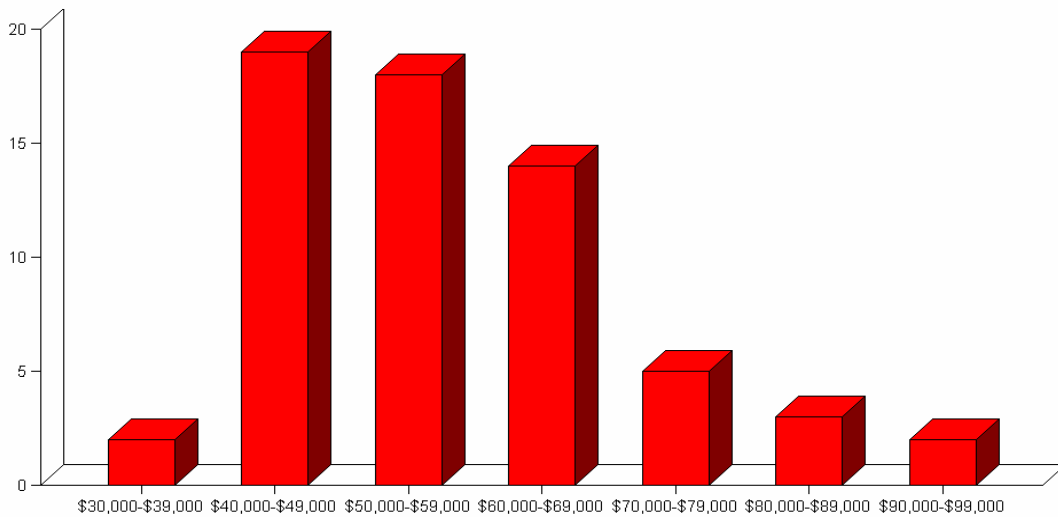
There was inconsistent interpretation of this question. Many MPOs had difficulty separating MPO staff from regional council or other shared staff.

Annual Salaries:

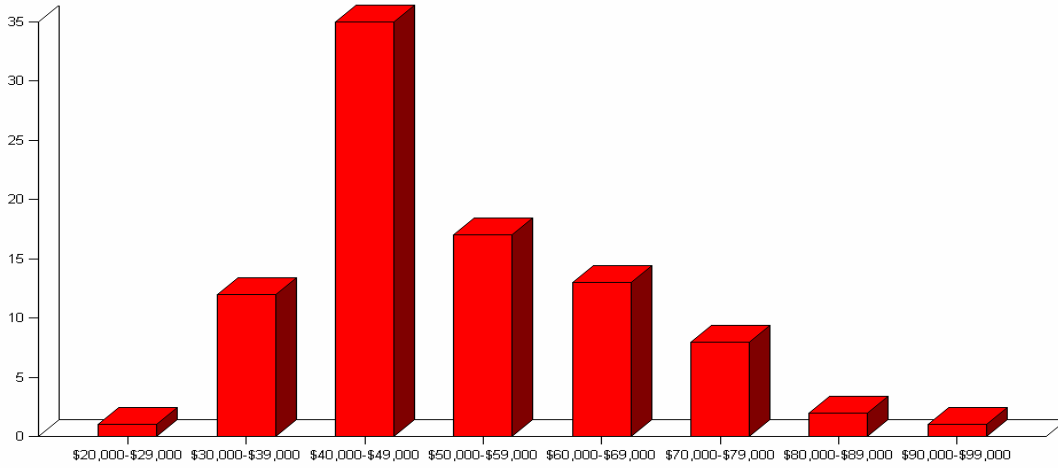
Executive Director:
(116 Responses)



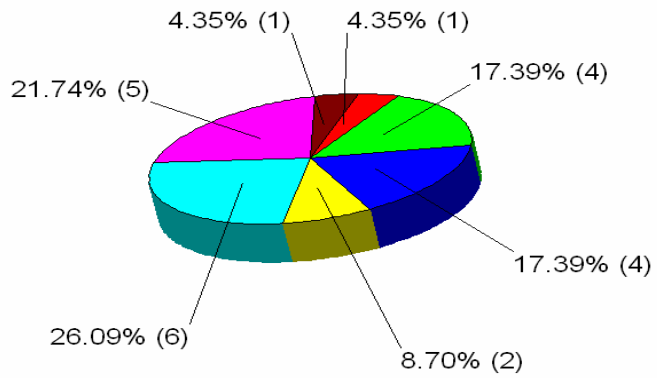
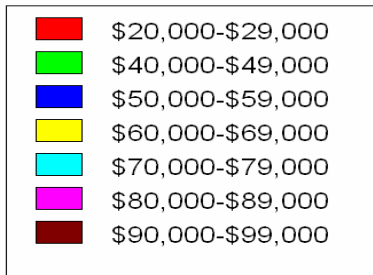
Senior/Principal Planner (AICP)
(63 Responses)



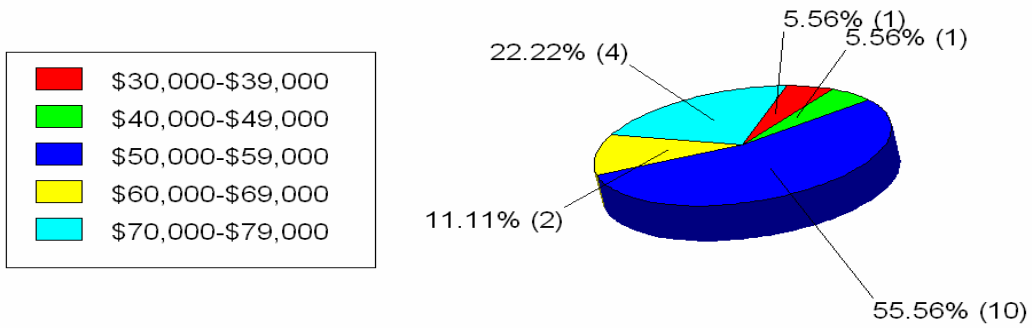
Senior/Principal Planner (Uncertified)
(89 Responses)



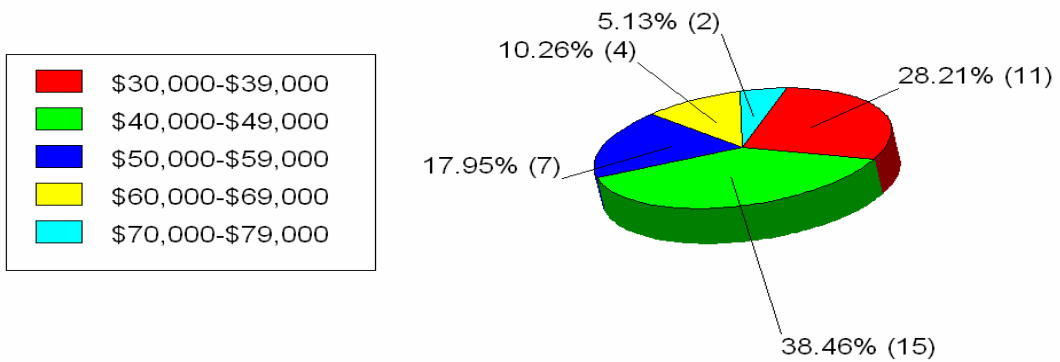
Senior/Principal Engineer (P.E.)
(23 Responses)



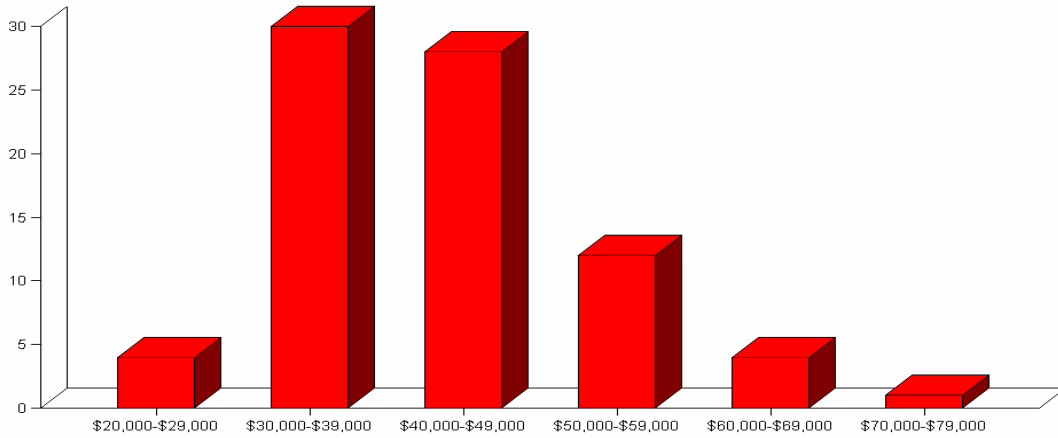
Senior/Principal Engineer (Not P.E.)
(18 Responses)



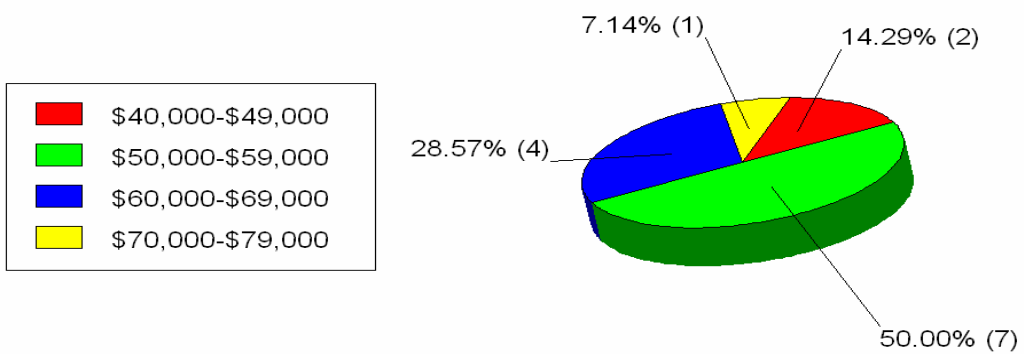
Planner II (AICP)
(39 Responses)



Planner II (Not Certified)
(79 Responses)

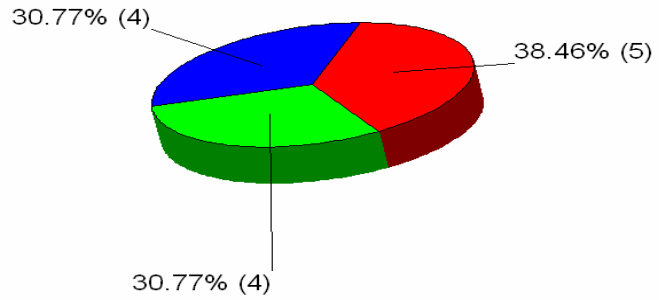
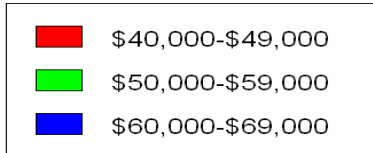


Engineer II (P.E.)
(14 Responses)

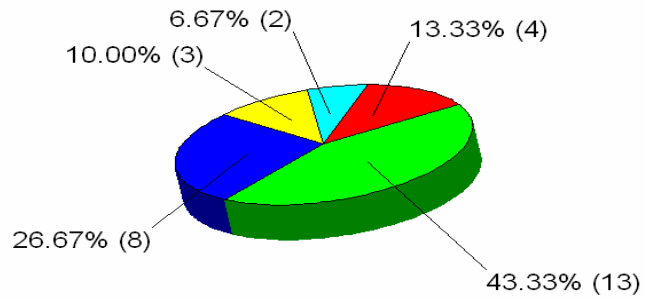


April 21, 2003

Engineer II (not P.E.)
(13 Responses)

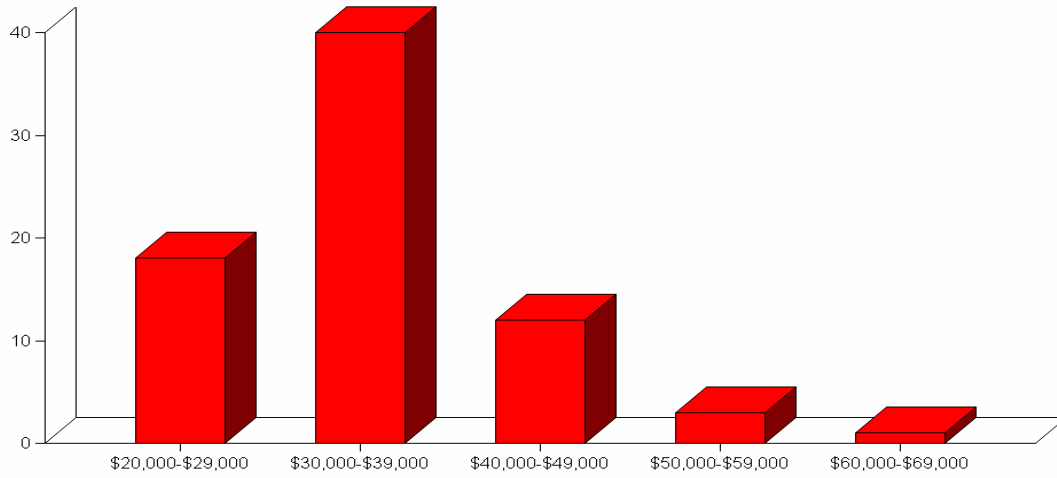


Planner I (AICP)
(30 Responses)



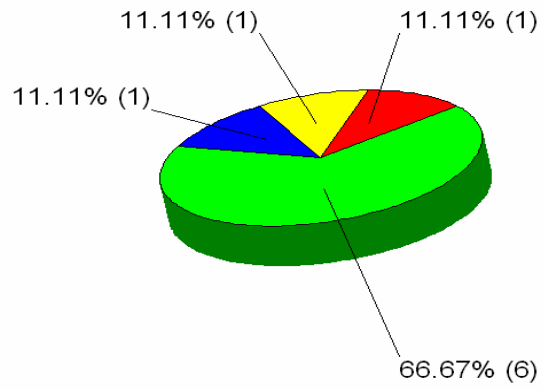
April 21, 2003

Planner I (Not Certified)
(74 Responses)

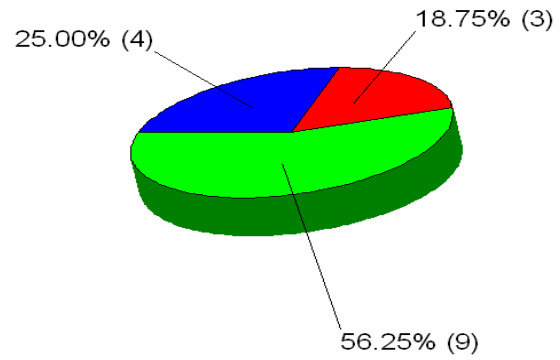
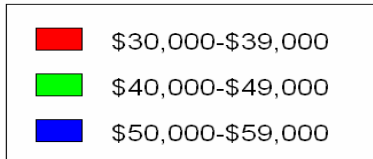


Engineer I (P.E.)
(9 Responses)

April 21, 2003



Engineer I (Not P.E.)
(16 Responses)



GIS Specialist
(67 Responses)

April 21, 2003

